

居室
A1: $4.15 \times 2.7 + 3.595 \times 2.35 + 11.37 \times 5.7 + 0.45 \times 4.1 = 86.31 \text{ m}^2$
A2: $3.05 \times 10.295 + 2.65 \times 11.345 + 2.15 \times 1.675 + 4.82 \times 2.6 = 77.60 \text{ m}^2$
A3: $2.75 \times 8.375 + 3 \times 6.775 + 2.5 \times 3.52 + 0.45 \times 1.675 + 0.8 \times 2.17 + 5.075 \times 2.8 = 68.86 \text{ m}^2$
B1: $2.8 \times 8.37 + 3 \times 6.77 + 2.75 \times 8.37 = 66.76 \text{ m}^2$
B2: $1.475 \times 6.15 + 9 \times 5.6 + 2.325 \times 8.55 = 79.35 \text{ m}^2$
B3: $3.5 \times 6.15 + 2 \times 4.27 + 3.15 \times 2.65 + 2.375 \times 1.45 + 7.85 \times 6.715 = 94.57 \text{ m}^2$
C1: $1.33 \times 5.3 + 1.85 \times 5.75 + 2.65 \times 1.15 + 7.44 \times 9.6 = 92.16 \text{ m}^2$
C2: $2 \times 1.725 + 4.97 \times 3.75 + 2.325 \times 2.45 + 3.78 \times 5.3 + 7.15 \times 5.725 = 88.75 \text{ m}^2$
D1: $2.005 \times 2.89 + 2.45 \times 1.675 + 3.225 \times 3.12 + 5.725 \times 7.11 + 2.85 \times 4.27 + 3.95 \times 2.725 + 2.825 \times 4.72 = 96.93 \text{ m}^2$
D2: $0.59 \times 1.65 + 0.4 \times 2 + 5.35 \times 2 + 1.45 \times 1.73 + 1 \times 4.21 + 9.71 \times 8.49 = 101.63 \text{ m}^2$
E1: $3.28 \times 10.71 + 1.45 \times 1.75 + 9.71 \times 4.3 = 79.21 \text{ m}^2$
E2: $0.35 \times 4.88 + 1 \times 2.835 + 1.45 \times 1.75 + 9.71 \times 7.505 = 79.95 \text{ m}^2$
F1: $1.885 \times 2 + 2.3 \times 1.05 + 3.15 \times 2.5 + 0.435 \times 5.65 = 67.37 \text{ m}^2$
F2: $1.85 \times 7.65 + 6.5 \times 8.15 = 67.13 \text{ m}^2$
總計: 1146.58 m^2

免計容積陽台
A,B棟: $1.275 \times 1.35 + 1.4675 \times 1.425 + 1.3 \times 1.35 + 0.35 \times 1.5 = 24.91 \text{ m}^2$
A1: $4.3 \times 1.3 + 3.775 \times 1 = 9.37 \text{ m}^2$
A2: $3.795 \times 1 + 1.95 \times 2.6 = 8.87 \text{ m}^2$
A3: $1.675 \times 3 = 5.03 \text{ m}^2$
B1: $3 \times 1.675 = 5.03 \text{ m}^2$
B2: $1.35 \times 3 + 2.425 \times 1 = 6.48 \text{ m}^2$
B3: $4.27 \times 1.675 + 3.35 \times 1 = 10.50 \text{ m}^2$
C1: $1.11 \times 1.6 + 3.68 \times 1.675 + 3.25 \times 1 = 11.19 \text{ m}^2$
C2: $1.8 \times 2.97 + 3.37 \times 1 = 8.72 \text{ m}^2$
D1: $3.425 \times 1 + 1.675 \times 3.225 = 8.83 \text{ m}^2$
D2: $1.2 \times 3.12 + 1.525 \times 2.55 = 7.63 \text{ m}^2$
D棟: $1.75 \times 1.35 = 2.36 \text{ m}^2$
E1: $1.2 \times 3.12 + 1.525 \times 2.55 = 7.63 \text{ m}^2$
E2: $1.2 \times 3.42 + 1.525 \times 2.92 = 8.58 \text{ m}^2$
F1: $2.3 \times 1.525 = 3.51 \text{ m}^2$
F2: $1.425 \times 2 + 1.925 \times 1.5 = 5.74 \text{ m}^2$
總計: 134.36 m^2

梯廳
A棟: $3.4 \times 3.4 + 3.76 \times 2.68 = 21.64 \text{ m}^2$
B棟: $2.6 \times 5.1 = 13.26 \text{ m}^2$
C棟: $2.25 \times 5.11 = 11.50 \text{ m}^2$
D棟: $5.6 \times 2.51 = 14.06 \text{ m}^2$
E棟: $2.45 \times 3.4 = 8.33 \text{ m}^2$
F棟: $2.29 \times 4.05 = 9.27 \text{ m}^2$
總計: 78.06 m^2

小於2m梯廳
A棟: $0.65 \times 1.05 = 0.68 \text{ m}^2$
B棟: $0.82 \times 1.25 = 1.03 \text{ m}^2$
總計: 1.71 m^2

安全梯
B棟: $2.1 \times 1.05 + 2.665 \times 3.4 + 3.17 \times 3.4 = 22.04 \text{ m}^2$
F棟: $4.27 \times 2.325 + 2.29 \times 3.6 = 18.17 \text{ m}^2$
總計: 40.21 m^2

特別安全梯
A棟: $3.42 \times 5.075 = 17.36 \text{ m}^2$
B棟: $3.42 \times 5.045 = 17.25 \text{ m}^2$
C棟: $1.8 \times 1.85 + 3.65 \times 4.57 + 0.85 \times 1.11 + 1.98 \times 4.57 + 3.13 \times 0.72 + (0.72 \times 0.72) / 2 + (0.72 \times 0.72) / 2 = 32.77 \text{ m}^2$
D棟: $4.075 \times 2.89 + 0.495 \times 1.275 + 4.57 \times 2.7 + 0.59 \times 1.05 + 0.35 \times 0.7 = 25.61 \text{ m}^2$
總計: 92.99 m^2

緊急升降機排煙室
C棟: $4.5 \times 2.39 + 0.4 \times 1.45 = 11.34 \text{ m}^2$
D棟: $4.085 \times 2.45 + 1.15 \times 1.425 = 11.65 \text{ m}^2$
總計: 22.99 m^2

緊急升降機
A棟: $2.7 \times 2.5 = 6.75 \text{ m}^2$
C棟: $2.45 \times 2.55 = 6.25 \text{ m}^2$
D棟: $2.45 \times 2.5 = 6.13 \text{ m}^2$
總計: 19.13 m^2

電梯間
A棟: $2.35 \times 2.15 = 5.05 \text{ m}^2$
B棟: $2.17 \times 2.4 = 5.21 \text{ m}^2$
E棟: $2.1 \times 2.35 = 4.94 \text{ m}^2$
F棟: $2.1 \times 2 = 4.20 \text{ m}^2$
總計: 19.40 m^2

管道間
A棟: $0.55 \times 1.65 + 0.55 \times 1.65 = 1.82 \text{ m}^2$
D棟: $2.45 \times 1.535 = 3.76 \text{ m}^2$
總計: 5.58 m^2

- X1-19 居室
- X162 免計容積陽台
- Z1-19 管道間
- Z162 安全梯
- Z162 小於2m梯廳
- Z162 梯廳
- Z162 特別安全梯
- Z162 緊急升降機
- Z162 緊急升降機排煙室
- Z162 電梯間

圖11-24 八層面積計算圖(S=1/300)

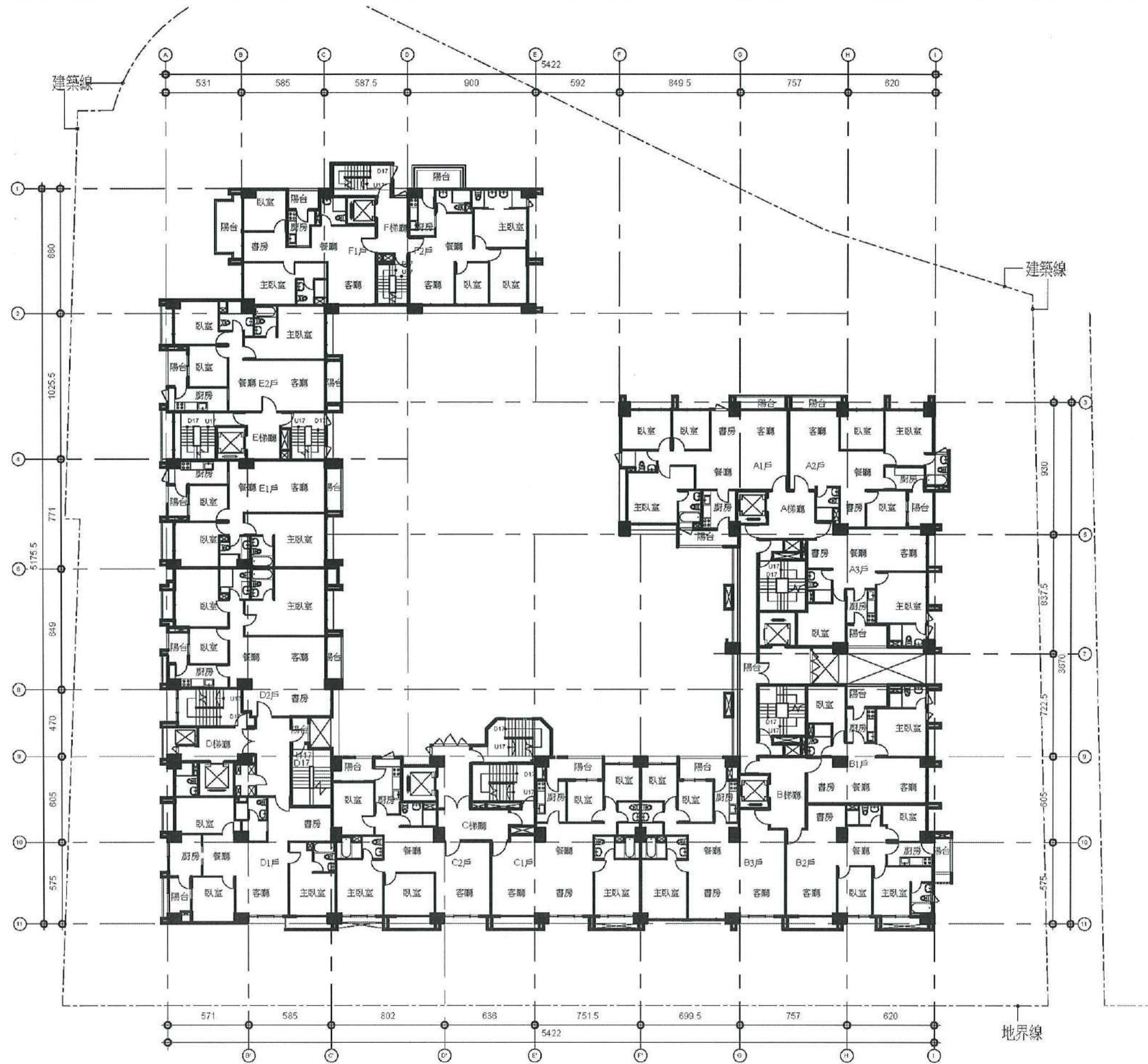
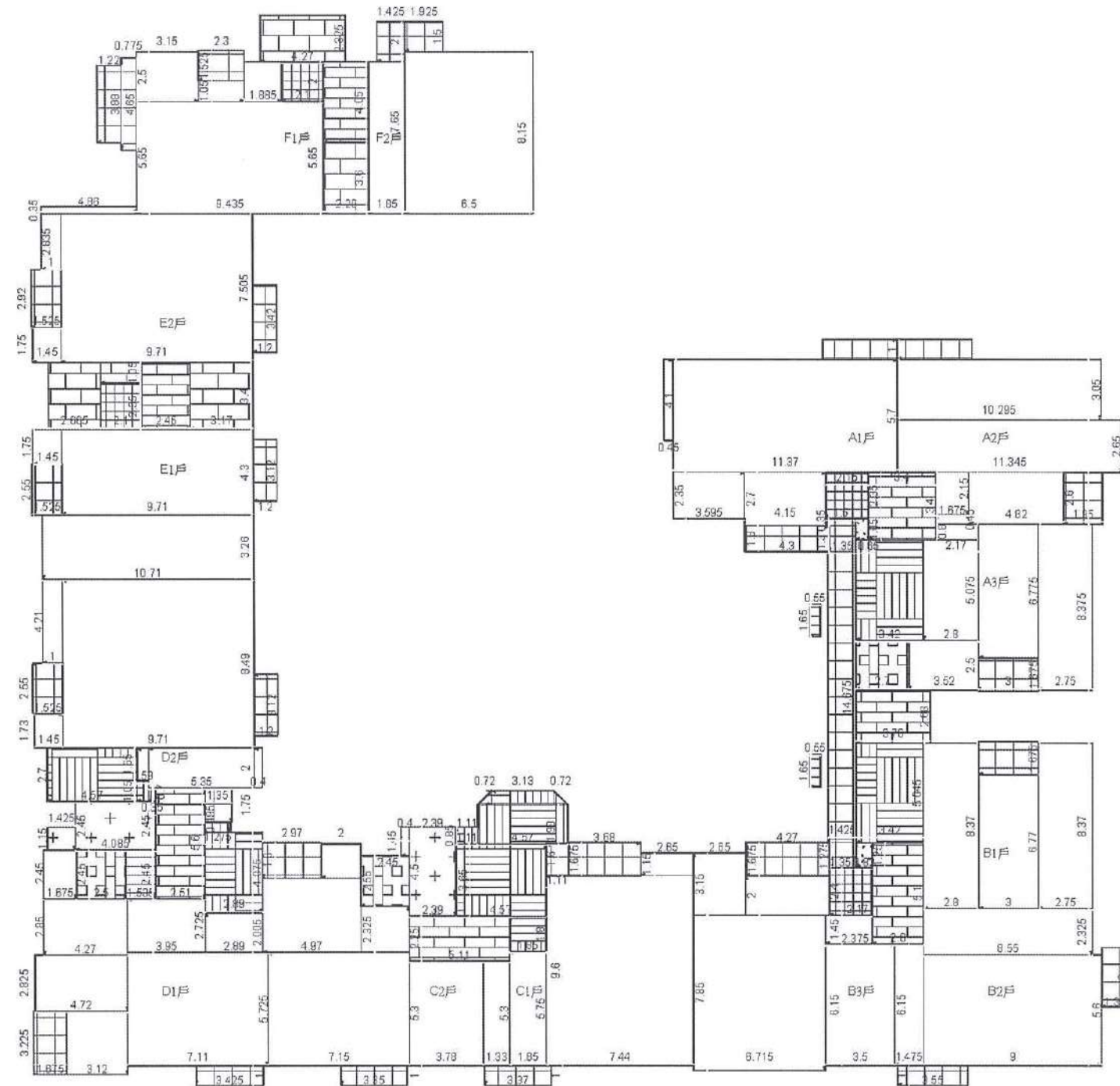


圖11-25 九層平面圖(S=1/300)

合康工程顧問股份有限公司



二、面積計算檢討
樓地板面積
 $1146.58+78.06+1.71+40.21+92.99+22.99+19.13+19.40+5.58=1426.65\text{ m}^2$
陽台面積
 $140.56\text{ m}^2 < 1426.65 \times 10\% = 142.67\text{ m}^2$...OK
梯廳面積
 $78.06\text{ m}^2 < 1426.65 \times 10\% = 142.67\text{ m}^2$...OK
陽台+梯廳面積
 $140.56+78.06=218.62\text{ m}^2 > 1426.65 \times 15\% = 214.00\text{ m}^2$
 $218.62 - 214.00 = 4.62\text{ m}^2$ (計入容積樓地板)
設備可面積
 $40.21+92.99+22.99+19.13+5.58 = 180.90\text{ m}^2$
當層樓地板面積 1426.65 m^2
當層容積樓地板面積 $1426.65-78.06-180.90+4.62=1172.31\text{ m}^2$

三、當層戶數檢討 14戶
四、緊急升降梯設置檢討
A,B,C三棟建築物為21層規劃(檢討11~21層)
A,B棟 $(86.31+77.60+68.86+66.76+79.35+94.57) \times 11 = 5207.95\text{ m}^2 > 500\text{ m}^2$ (設置緊急升降梯)
C棟 $(92.16+88.75) \times 11 = 1990.01\text{ m}^2 > 500\text{ m}^2$ (設置緊急升降梯)
D棟 一棟建築物為19層規劃
 $(93.93+101.63) \times 9 = 1760.04\text{ m}^2 > 500\text{ m}^2$ (設置緊急升降梯)
E,F棟兩棟建築物為13層規劃
E棟 $(79.21+79.95) \times 2 = 318.32\text{ m}^2 < 500\text{ m}^2$ (免設緊急升降梯)
五、梯廳面積檢討
A,B棟 $2.68 \times 3.76 = 10.08\text{ m}^2 > 10.00\text{ m}^2$...OK(以梯廳計算)
C棟 $2.39 \times 4.5 + 0.4 \times 1.45 = 11.34\text{ m}^2 > 10.00\text{ m}^2$...OK(以梯廳計算)
D棟 $4.085 \times 2.45 + 1.15 \times 1.425 = 11.65\text{ m}^2 > 10.00\text{ m}^2$...OK(以梯廳計算)

六、特別安全梯面積檢討
A,B棟
 $(86.31+77.60+68.86+66.76+79.35+94.57) \times 3\% = 14.20\text{ m}^2$
 $(17.36+17.25+10.03)=44.69\text{ m}^2 > 14.20\text{ m}^2$...OK
C棟
 $(92.16+88.75) \times 3\% = 5.43\text{ m}^2$...OK
 $(32.77+11.34)=44.11\text{ m}^2 > 5.43\text{ m}^2$...OK
D棟
 $25.61+11.65 = 37.26\text{ m}^2 > (96.93+11.63) \times 3\% = 3.26\text{ m}^2$...OK
七、樓梯及平台寬度檢討(居室面積)
A,B棟
 $86.31+77.60+68.86+66.76+79.35+94.57 = 473.45\text{ m}^2 > 200\text{ m}^2$
(樓梯寬度應達120cm)
C棟 $92.16+88.75=180.91\text{ m}^2 < 200\text{ m}^2$
D棟 $96.93+101.63 = 198.56\text{ m}^2 < 200\text{ m}^2$
E棟 $79.21+79.95 = 159.16\text{ m}^2 < 200\text{ m}^2$
F棟 $67.37+67.13 = 134.50\text{ m}^2 < 200\text{ m}^2$

居室
A1: $4.15 \times 2.7 + 3.595 \times 2.35 + 11.37 \times 5.7 + 0.45 \times 4.1 = 86.31\text{ m}^2$
A2: $3.05 \times 10.295 + 2.85 \times 11.345 + 2.15 \times 1.675 + 4.82 \times 2.6 = 77.80\text{ m}^2$
A3: $2.75 \times 8.375 + 3 \times 6.775 + 2.5 \times 3.52 + 0.45 \times 1.675 + 0.8 \times 2.17 + 5.075 \times 2.8 = 68.86\text{ m}^2$
B1: $2.8 \times 8.37 + 3 \times 6.77 + 2.75 \times 8.37 = 66.76\text{ m}^2$
B2: $1.475 \times 6.15 + 9 \times 5.8 + 2.325 \times 8.55 = 79.35\text{ m}^2$
B3: $3.5 \times 6.15 + 2 \times 4.27 + 3.15 \times 2.65 + 2.375 \times 1.45 + 7.85 \times 6.715 = 64.57\text{ m}^2$
C1: $1.33 \times 5.3 + 1.85 \times 5.75 + 2.65 \times 1.15 + 7.44 \times 9.6 = 92.16\text{ m}^2$
C2: $2 \times 1.725 + 4.97 \times 3.75 + 2.325 \times 2.45 + 3.78 \times 5.3 + 7.15 \times 5.725 = 88.75\text{ m}^2$
D1: $2.005 \times 2.80 + 2.45 \times 1.675 + 3.225 \times 3.12 + 5.725 \times 7.11 + 2.85 \times 4.27 + 3.95 \times 2.725 + 2.825 \times 4.72 = 96.93\text{ m}^2$
D2: $0.59 \times 1.65 + 0.4 \times 2 + 5.35 \times 2 + 1.45 \times 1.73 + 1 \times 4.21 + 9.71 \times 8.49 = 101.63\text{ m}^2$
E1: $3.28 \times 10.71 + 1.45 \times 1.75 + 9.71 \times 4.3 = 79.21\text{ m}^2$
E2: $0.35 \times 4.86 + 1 \times 2.835 + 1.45 \times 1.75 + 9.71 \times 7.505 = 79.95\text{ m}^2$
F1: $1.885 \times 2 + 2.3 \times 1.05 + 3.15 \times 2.5 + 9.435 \times 5.65 = 67.37\text{ m}^2$
F2: $1.85 \times 7.65 + 6.5 \times 8.15 = 67.13\text{ m}^2$
總計: 1146.58 m^2

免計容積陽台
AB棟: $1.275 \times 1.35 + 14.675 \times 1.425 + 1.3 \times 1.35 + 0.35 \times 1.5 = 24.91\text{ m}^2$
A1: $4.3 \times 1.3 + 3.775 \times 1 = 9.37\text{ m}^2$
A2: $3.795 \times 1 + 1.95 \times 2.6 = 8.87\text{ m}^2$
A3: $1.675 \times 3 = 5.03\text{ m}^2$
B1: $3 \times 1.675 = 5.03\text{ m}^2$
B2: $1.35 \times 3 + 3.55 \times 1 = 7.60\text{ m}^2$
B3: $4.27 \times 1.675 = 7.15\text{ m}^2$
C1: $1.11 \times 1.6 + 3.68 \times 1.675 + 1 \times 3.37 = 11.31\text{ m}^2$
C2: $1.8 \times 2.97 + 1 \times 3.35 = 8.70\text{ m}^2$
D1: $1 \times 3.425 + 1.675 \times 3.225 = 8.83\text{ m}^2$
D2: $1.2 \times 3.12 + 1.525 \times 2.55 = 7.63\text{ m}^2$
E1: $1.2 \times 3.12 + 1.525 \times 2.55 = 7.63\text{ m}^2$
E2: $1.2 \times 3.42 + 1.525 \times 2.92 = 8.56\text{ m}^2$
F1: $4.65 \times 0.775 + 1.22 \times 3.88 + 2.3 \times 1.525 = 11.84\text{ m}^2$
F2: $1.425 \times 2 + 1.925 \times 1.5 = 5.74\text{ m}^2$
總計: 140.56 m^2

梯廳
A棟: $3.4 \times 3.4 + 3.76 \times 2.68 = 21.64\text{ m}^2$
B棟: $2.6 \times 5.1 = 13.26\text{ m}^2$
C棟: $2.25 \times 5.11 = 11.50\text{ m}^2$
D棟: $5.8 \times 2.51 = 14.06\text{ m}^2$
E棟: $2.45 \times 3.4 = 8.33\text{ m}^2$
F棟: $2.29 \times 4.05 = 9.27\text{ m}^2$
總計: 78.06 m^2

小於2m梯廳
A棟: $0.65 \times 1.05 = 0.68\text{ m}^2$
B棟: $0.82 \times 1.25 = 1.03\text{ m}^2$
總計: 1.71 m^2

安全梯
B棟: $2.1 \times 1.05 + 2.665 \times 3.4 + 3.17 \times 3.4 = 22.04\text{ m}^2$
F棟: $4.27 \times 2.325 + 2.29 \times 3.6 = 18.17\text{ m}^2$
總計: 40.21 m^2

特別安全梯
A棟: $3.42 \times 5.075 = 17.36\text{ m}^2$
B棟: $3.42 \times 5.045 = 17.25\text{ m}^2$
C棟: $1.8 \times 1.85 + 3.65 \times 4.57 + 0.85 \times 1.11 + 1.98 \times 4.57 + 3.13 \times 0.72 + (0.72 \times 0.72) / 2 + (0.72 \times 0.72) / 2 = 32.77\text{ m}^2$
D棟: $4.075 \times 2.89 + 0.495 \times 1.275 + 4.57 \times 2.7 + 0.59 \times 1.05 + 0.35 \times 0.7 = 25.61\text{ m}^2$
總計: 92.99 m^2

緊急升降梯排煙室
C棟: $4.5 \times 2.39 + 0.4 \times 1.45 = 11.34\text{ m}^2$
D棟: $4.085 \times 2.45 + 1.15 \times 1.425 = 11.65\text{ m}^2$
總計: 22.99 m^2

緊急升降梯
A棟: $2.7 \times 2.5 = 6.75\text{ m}^2$
C棟: $2.45 \times 2.55 = 6.25\text{ m}^2$
D棟: $2.45 \times 2.5 = 6.13\text{ m}^2$
總計: 19.13 m^2

電梯間
A棟: $2.35 \times 2.15 = 5.05\text{ m}^2$
B棟: $2.17 \times 2.4 = 5.21\text{ m}^2$
E棟: $2.1 \times 2.35 = 4.94\text{ m}^2$
F棟: $2.1 \times 2 = 4.20\text{ m}^2$
總計: 19.40 m^2

管道間
A棟: $0.55 \times 1.65 + 0.55 \times 1.65 = 1.82\text{ m}^2$
D棟: $2.45 \times 1.535 = 3.76\text{ m}^2$
總計: 5.58 m^2

- X1-19 居室
- X162 免計容積陽台
- Z1-19 管道間
- Z162 安全梯
- Z162 小於2m梯廳
- Z162 梯廳
- Z162 特別安全梯
- Z162 緊急升降梯
- Z162 緊急升降梯排煙室
- Z162 電梯間



圖11-26 九層面積計算圖(S=1/300)

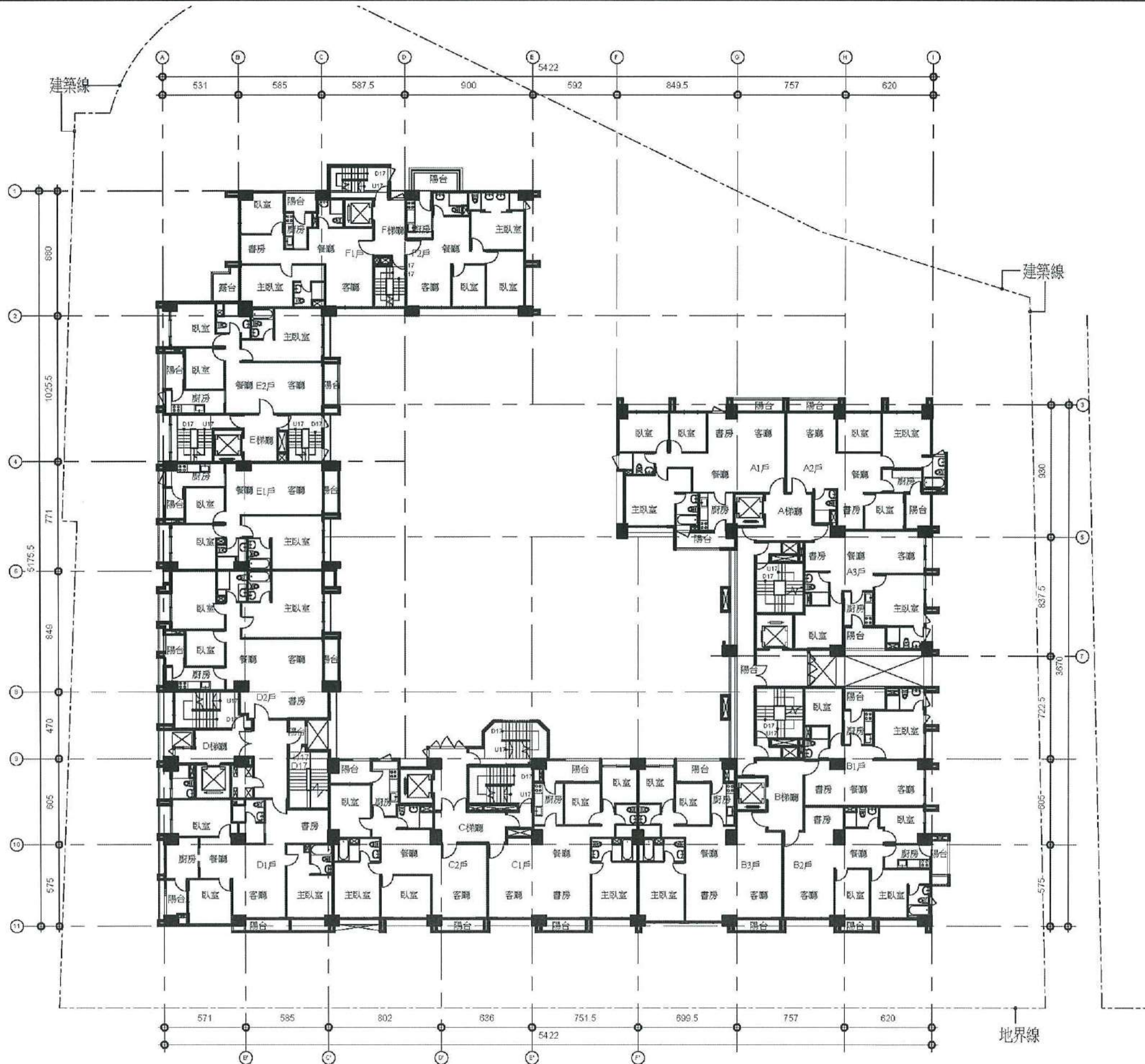


圖11-27 十層平面圖(S=1/300)

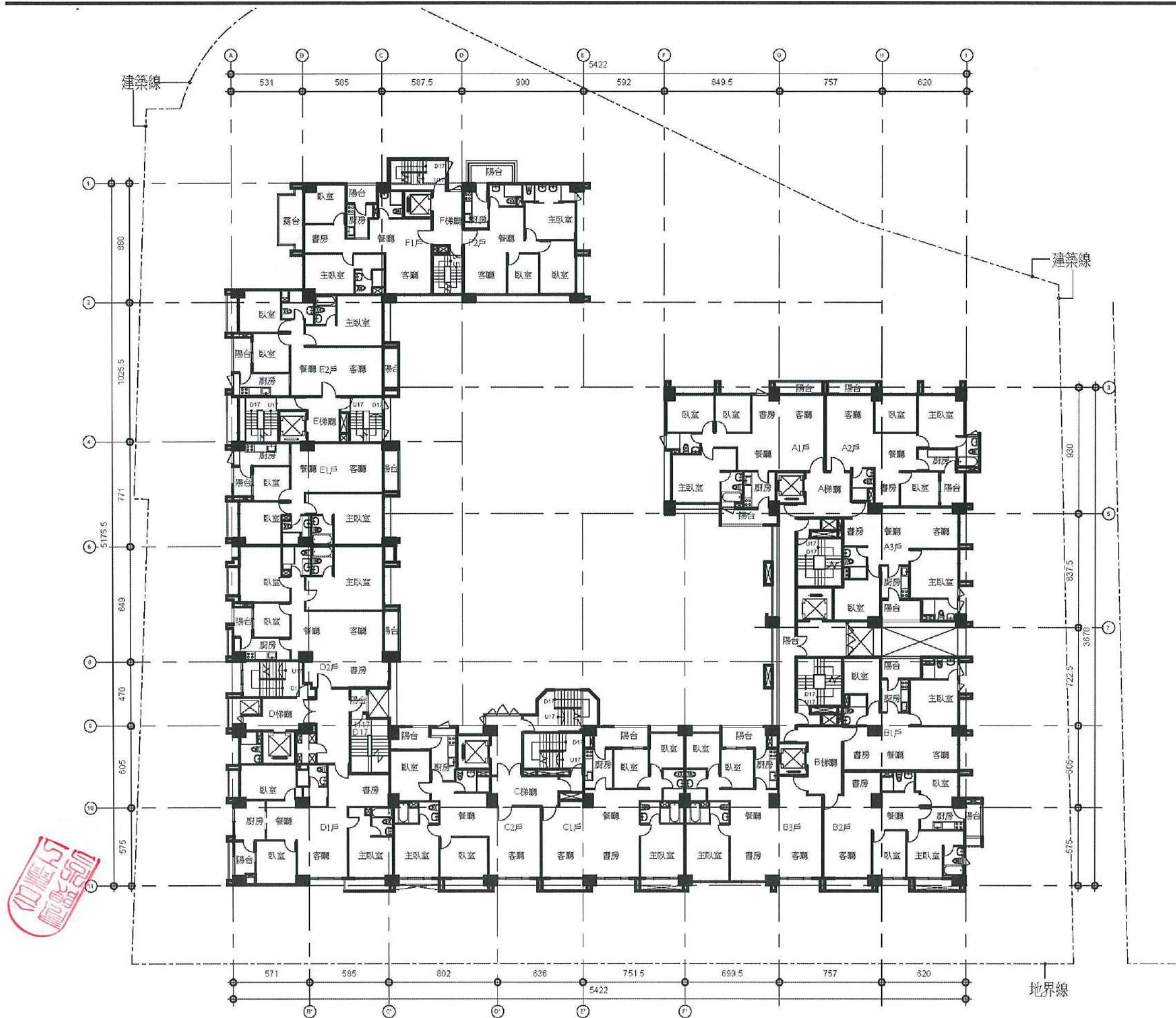
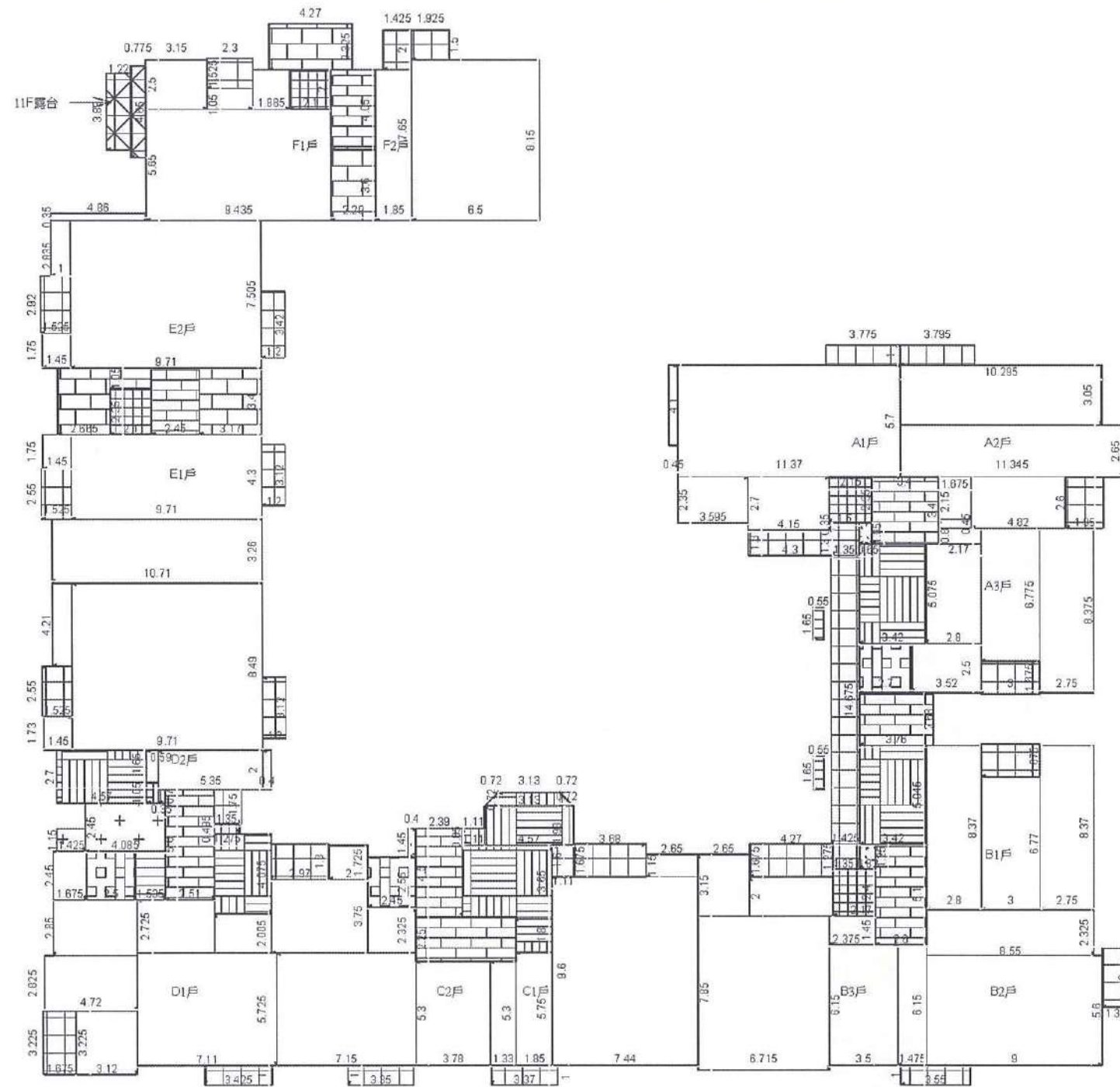


圖11-29 十一、十三層平面圖(S=1/300)



二、面積計算檢討
樓地板面積計算
 $1146.58+88.81+2.29+40.21+92.99+11.65+19.13+19.40+5.58=1426.64\text{m}^2$
陽台面積檢討
 $132.23\text{m}^2 < 1426.65 \times 10\% = 142.66\text{m}^2 \dots \text{OK}$
梯廳面積檢討
 $88.81\text{m}^2 < 1426.65 \times 10\% = 142.66\text{m}^2 \dots \text{OK}$
陽台+梯廳面積檢討
 $132.23+88.81=221.04\text{m}^2 > 1426.64 \times 15\% = 214.00\text{m}^2$
 $221.04 - 214.00 = 7.04\text{m}^2$ (計入容積樓地板面積)
設備間面積檢討
 $40.21+92.99+11.65+19.13+5.58 = 169.56\text{m}^2$
當層樓地板面積 1426.64m^2
當層容積樓地板面積
 $1426.64-88.81-169.56+7.04 = 1175.31\text{m}^2$

三、當層戶數檢討 14戶
四、緊急升降機設置檢討
A,B,C三棟建築物為21層規畫(檢討11~21層)
A,B棟 $(86.31+77.60+68.86+66.76+79.35+94.57) \times 11 = 5207.95\text{m}^2 > 500\text{m}^2$ (設置緊急升降機)
C棟 $(92.16+88.75) \times 11 = 1990.01\text{m}^2 > 500\text{m}^2$ (設置緊急升降機)
D棟一棟建築物為19層規畫
 $(93.93+101.63) \times 9 = 1760.04\text{m}^2 > 500\text{m}^2$ (設置緊急升降機)
E,F棟兩棟建築物為13層規畫
E棟 $(79.21+79.95) \times 2 = 318.32\text{m}^2 < 500\text{m}^2$ (免設緊急升降機)
五、排煙室面積檢討
A,B棟 $2.68 \times 3.76 = 10.08\text{m}^2 > 10.00\text{m}^2 \dots \text{OK}$ (以梯廳計算)
C棟 $2.39 \times 4.5 + 0.4 \times 1.45 = 11.34\text{m}^2 > 10.00\text{m}^2 \dots \text{OK}$ (以梯廳計算)
D棟 $4.085 \times 2.45 + 1.15 \times 1.425 = 11.65\text{m}^2 > 10.00\text{m}^2 \dots \text{OK}$ (以梯廳計算)

六、特別安全梯面積檢討
A,B棟
 $(86.31+77.60+68.86+66.76+79.35+94.57) \times 3\% = 14.30\text{m}^2$
 $(17.36+17.25+10.08) = 44.69\text{m}^2 > 14.30\text{m}^2 \dots \text{OK}$
C棟
 $(92.16+88.75) \times 3\% = 5.43\text{m}^2 \dots \text{OK}$
 $(32.77+11.34) = 44.11\text{m}^2 > 5.43\text{m}^2 \dots \text{OK}$
D棟
 $25.61+11.65 = 37.26\text{m}^2 > (96.93+11.63) \times 3\% = 3.26\text{m}^2 \dots \text{OK}$
七、樓梯及平台寬度檢討(居室面積)
A,B棟
 $86.31+77.60+68.86+66.76+79.35+94.57 = 473.45\text{m}^2 > 200\text{m}^2$
(樓梯寬度應 $\geq 120\text{cm}$)
C棟 $92.16+88.75 = 180.91\text{m}^2 < 200\text{m}^2$
D棟 $96.93+101.63 = 198.56\text{m}^2 < 200\text{m}^2$
E棟 $79.21+79.95 = 159.16\text{m}^2 < 200\text{m}^2$
F棟 $67.37+67.13 = 134.50\text{m}^2 < 200\text{m}^2$

居室
A1: $4.15 \times 2.7 + 3.595 \times 2.35 + 11.37 \times 5.7 + 0.45 \times 4.1 = 86.31\text{m}^2$
A2: $3.05 \times 10.295 + 2.65 \times 11.345 + 2.15 \times 1.675 + 4.82 \times 2.6 = 77.60\text{m}^2$
A3: $2.75 \times 8.375 + 3 \times 6.775 + 2.5 \times 3.52 + 0.45 \times 1.675 + 0.8 \times 2.17 + 5.075 \times 2.8 = 68.86\text{m}^2$
B1: $2.8 \times 8.37 + 3 \times 6.77 + 2.75 \times 8.37 = 66.76\text{m}^2$
B2: $1.475 \times 6.15 + 9 \times 5.6 + 2.325 \times 8.55 = 79.35\text{m}^2$
B3: $3.5 \times 6.15 + 2 \times 4.27 + 3.15 \times 2.65 + 2.375 \times 1.45 + 7.85 \times 6.715 = 94.57\text{m}^2$
C1: $1.33 \times 5.3 + 1.85 \times 5.75 + 2.65 \times 1.15 + 7.44 \times 0.6 = 92.16\text{m}^2$
C2: $2 \times 1.725 + 4.97 \times 3.75 + 2.325 \times 2.45 + 3.78 \times 5.3 + 7.15 \times 5.725 = 88.75\text{m}^2$
D1: $2.005 \times 2.89 + 2.45 \times 1.675 + 3.225 \times 3.12 + 5.725 \times 7.11 + 2.85 \times 4.27 + 3.95 \times 2.725 + 2.825 \times 4.72 = 98.93\text{m}^2$
D2: $0.59 \times 1.65 + 0.4 \times 2 + 5.35 \times 2 + 1.45 \times 1.73 + 1 \times 4.21 + 9.71 \times 8.49 = 101.63\text{m}^2$
E1: $3.26 \times 10.71 + 1.45 \times 1.75 + 9.71 \times 4.3 = 79.21\text{m}^2$
E2: $0.35 \times 4.86 + 1 \times 2.835 + 1.45 \times 1.75 + 9.71 \times 7.505 = 79.95\text{m}^2$
F1: $1.885 \times 2 + 2.3 \times 1.05 + 3.15 \times 2.5 + 9.435 \times 5.65 = 67.37\text{m}^2$
F2: $1.85 \times 7.85 + 6.5 \times 8.15 = 67.13\text{m}^2$
總計: 1146.58m^2

免計容積陽台
AB棟: $1.275 \times 1.35 + 14.675 \times 1.425 + 1.3 \times 1.35 + 0.35 \times 1.5 = 24.91\text{m}^2$
A1: $4.3 \times 1.3 + 3.775 \times 1 = 9.37\text{m}^2$
A2: $3.795 \times 1 + 1.95 \times 2.6 = 8.87\text{m}^2$
A3: $1.675 \times 3 = 5.03\text{m}^2$
B1: $3 \times 1.675 = 5.03\text{m}^2$
B2: $1.35 \times 3 + 3.55 \times 1 = 7.60\text{m}^2$
B3: $4.27 \times 1.675 = 7.15\text{m}^2$
C1: $1.11 \times 1.6 + 3.08 \times 1.675 + 1 \times 3.37 = 11.31\text{m}^2$
C2: $1.8 \times 2.97 + 1 \times 3.35 = 8.70\text{m}^2$
D1: $1 \times 3.425 + 1.675 \times 3.225 = 8.83\text{m}^2$
D2: $1.2 \times 3.12 + 1.525 \times 2.55 = 7.63\text{m}^2$
E棟: $1.75 \times 1.35 = 2.36\text{m}^2$
F1: $1.2 \times 3.12 + 1.525 \times 2.55 = 7.63\text{m}^2$
F2: $1.2 \times 3.42 + 1.525 \times 2.92 = 8.66\text{m}^2$
總計: 132.23m^2

梯廳
A棟: $3.4 \times 3.4 + 3.76 \times 2.68 = 21.64\text{m}^2$
B棟: $2.6 \times 5.1 = 13.26\text{m}^2$
C棟: $4.5 \times 2.39 + 2.25 \times 5.11 = 22.25\text{m}^2$
D棟: $5.6 \times 2.51 = 14.06\text{m}^2$
E棟: $2.45 \times 3.4 = 8.33\text{m}^2$
F棟: $2.29 \times 4.05 = 9.27\text{m}^2$
總計: 88.81m^2

小於2m梯廳
A棟: $0.65 \times 1.05 = 0.68\text{m}^2$
B棟: $0.82 \times 1.25 = 1.03\text{m}^2$
C棟: $0.4 \times 1.45 = 0.58\text{m}^2$
總計: 2.29m^2

安全梯
B棟: $2.1 \times 1.05 + 2.665 \times 3.4 + 3.17 \times 3.4 = 22.04\text{m}^2$
F棟: $4.27 \times 2.325 + 2.29 \times 3.6 = 18.17\text{m}^2$
總計: 40.21m^2

特別安全梯
A棟: $3.42 \times 5.075 = 17.36\text{m}^2$
B棟: $3.42 \times 5.045 = 17.25\text{m}^2$
C棟: $1.8 \times 1.85 + 3.65 \times 4.57 + 0.85 \times 1.11 + 1.98 \times 4.57 + 3.13 \times 0.72 + (0.72 \times 0.72) / 2 + (0.72 \times 0.72) / 2 = 32.77\text{m}^2$
D棟: $4.075 \times 2.89 + 0.495 \times 1.275 + 4.57 \times 2.7 + 0.59 \times 1.05 + 0.35 \times 0.7 = 25.61\text{m}^2$
總計: 92.99m^2

緊急升降機排煙室
D棟: $4.085 \times 2.45 + 1.15 \times 1.425 = 11.65\text{m}^2$
總計: 11.65m^2

緊急升降機
A棟: $2.7 \times 2.5 = 6.75\text{m}^2$
C棟: $2.45 \times 2.55 = 6.25\text{m}^2$
D棟: $2.45 \times 2.5 = 6.13\text{m}^2$
總計: 19.13m^2

電梯間
A棟: $2.35 \times 2.15 = 5.05\text{m}^2$
B棟: $2.17 \times 2.4 = 5.21\text{m}^2$
E棟: $2.1 \times 2.35 = 4.94\text{m}^2$
F棟: $2.1 \times 2 = 4.20\text{m}^2$
總計: 19.40m^2

露台
F1: $0.775 \times 4.65 + 1.22 \times 3.88 = 8.34\text{m}^2$
總計: 8.34m^2

管道間
A棟: $0.55 \times 1.65 + 0.55 \times 1.65 = 1.82\text{m}^2$
D棟: $2.45 \times 1.535 = 3.76\text{m}^2$
總計: 5.58m^2

- X1-19 居室
- X162 免計容積陽台
- Z1-19 管道間
- Z1-20 露台
- Z162 安全梯
- Z162 小於2m梯廳
- Z162 梯廳
- Z162 特別安全梯
- Z162 緊急升降機
- Z162 緊急升降機排煙室
- Z162 電梯間

圖11-30 十一、十三層面積計算圖(S=1/300)