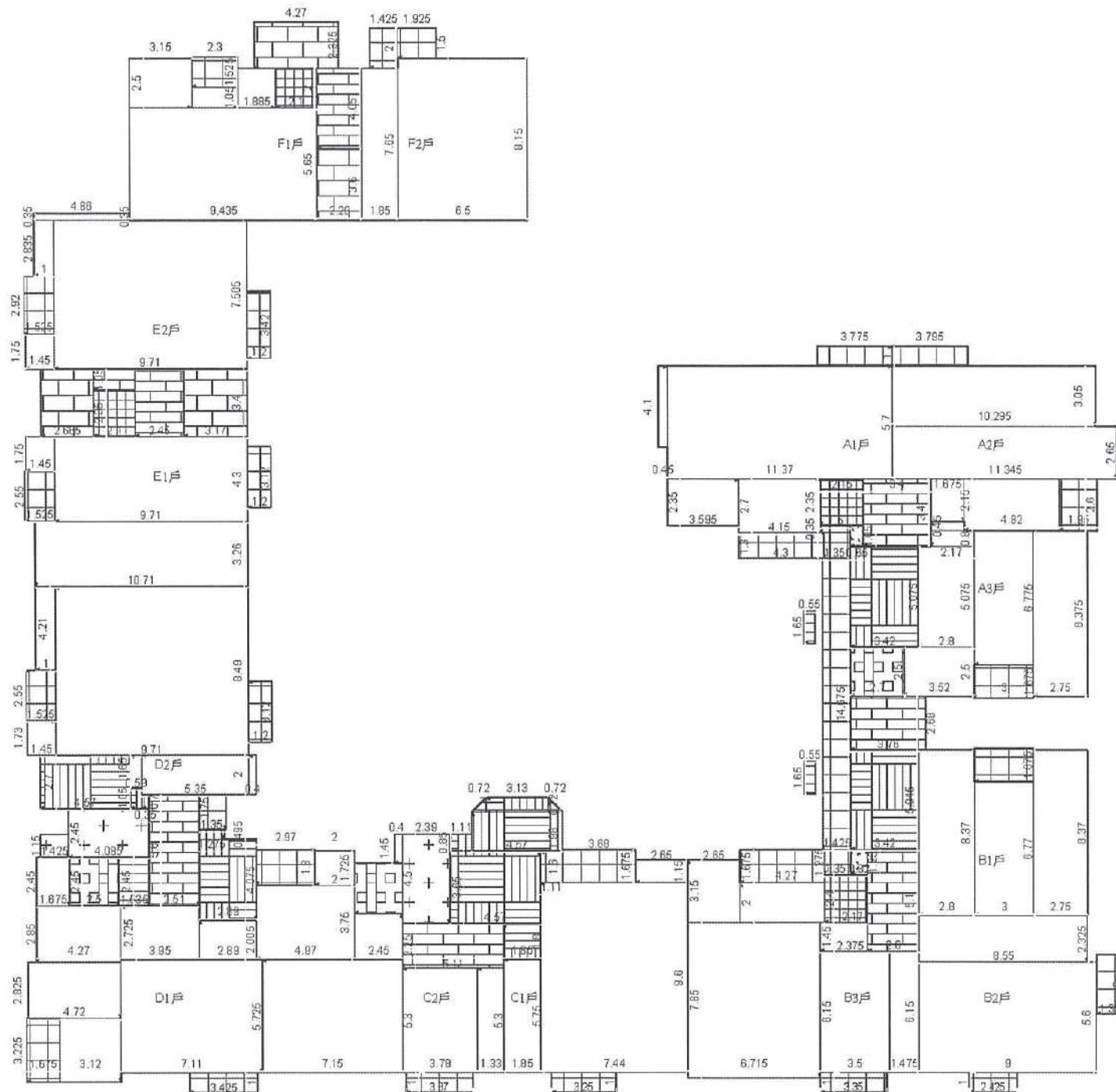


圖11-31 十二層平面圖(S=1/300)



居室
 A1: $4.15 \times 2.7 + 3.595 \times 2.35 + 11.37 \times 5.7 + 0.45 \times 4.1 = 86.31 \text{ m}^2$
 A2: $3.05 \times 10.295 + 2.85 \times 11.345 + 2.15 \times 1.675 + 4.82 \times 2.6 = 77.60 \text{ m}^2$
 A3: $2.75 \times 8.375 + 3 \times 6.775 + 2.5 \times 3.52 + 0.45 \times 1.675 + 0.8 \times 2.17 + 5.075 \times 2.8 = 68.86 \text{ m}^2$
 B1: $2.8 \times 8.37 + 3 \times 6.77 + 2.75 \times 8.37 = 66.76 \text{ m}^2$
 B2: $1.475 \times 6.15 + 9 \times 5.6 + 2.325 \times 8.55 = 79.35 \text{ m}^2$
 B3: $3.5 \times 8.15 + 2 \times 4.27 + 3.15 \times 2.85 + 2.375 \times 1.45 + 7.85 \times 6.715 = 94.57 \text{ m}^2$
 C1: $1.33 \times 5.8 + 1.85 \times 5.75 + 2.85 \times 1.15 + 7.44 \times 9.6 = 92.16 \text{ m}^2$
 C2: $2 \times 1.725 + 4.97 \times 3.75 + 2.325 \times 2.45 + 3.78 \times 5.3 + 7.15 \times 5.725 = 88.75 \text{ m}^2$
 D1: $2.005 \times 2.89 + 2.45 \times 1.875 + 3.225 \times 3.12 + 5.725 \times 7.11 + 2.85 \times 4.27 + 3.95 \times 2.725 + 2.825 \times 4.72 = 96.93 \text{ m}^2$
 D2: $0.69 \times 1.85 + 0.4 \times 2 + 5.35 \times 2 + 1.45 \times 1.73 + 1 \times 4.21 + 0.71 \times 8.49 = 101.63 \text{ m}^2$
 E1: $3.28 \times 10.71 + 1.45 \times 1.75 + 9.71 \times 4.3 = 79.21 \text{ m}^2$
 E2: $0.35 \times 4.88 + 1 \times 2.835 + 1.45 \times 1.75 + 9.71 \times 7.505 = 79.95 \text{ m}^2$
 F1: $1.885 \times 2 + 2.8 \times 1.05 + 3.15 \times 2.5 + 9.435 \times 5.65 = 67.37 \text{ m}^2$
 F2: $1.85 \times 7.65 + 0.5 \times 8.15 = 67.13 \text{ m}^2$
 總計: 1146.58 m^2

免計容積陽台
 AB棟: $1.275 \times 1.35 + 14.675 \times 1.425 + 1.3 \times 1.35 + 0.35 \times 1.5 = 24.91 \text{ m}^2$
 A1: $4.3 \times 1.3 + 3.775 \times 1 = 9.37 \text{ m}^2$
 A2: $3.795 \times 1 + 1.95 \times 2.6 = 8.87 \text{ m}^2$
 A3: $1.675 \times 3 = 5.03 \text{ m}^2$
 B1: $3 \times 1.675 = 5.03 \text{ m}^2$
 B2: $1.35 \times 3 + 2.425 \times 1 = 6.48 \text{ m}^2$
 B3: $4.27 \times 1.675 + 3.35 \times 1 = 10.50 \text{ m}^2$
 C1: $1.11 \times 1.6 + 3.68 \times 1.675 + 3.25 \times 1 = 11.19 \text{ m}^2$
 C2: $1.8 \times 2.97 + 3.37 \times 1 = 8.72 \text{ m}^2$
 D1: $3.425 \times 1 + 1.675 \times 3.225 = 8.83 \text{ m}^2$
 D2: $1.2 \times 3.12 + 1.525 \times 2.55 = 7.63 \text{ m}^2$
 D棟: $1.75 \times 1.35 = 2.36 \text{ m}^2$
 E1: $1.2 \times 3.12 + 1.525 \times 2.55 = 7.63 \text{ m}^2$
 E2: $1.2 \times 3.42 + 1.525 \times 2.92 = 8.56 \text{ m}^2$
 F1: $2.3 \times 1.525 = 3.51 \text{ m}^2$
 F2: $1.425 \times 2 + 1.025 \times 1.5 = 5.74 \text{ m}^2$
 總計: 134.36 m^2

梯廳
 A棟: $3.4 \times 3.4 + 3.76 \times 2.68 = 21.64 \text{ m}^2$
 B棟: $2.6 \times 5.1 = 13.26 \text{ m}^2$
 C棟: $2.25 \times 5.11 = 11.50 \text{ m}^2$
 D棟: $5.6 \times 2.51 = 14.06 \text{ m}^2$
 E棟: $2.45 \times 3.4 = 8.33 \text{ m}^2$
 F棟: $2.29 \times 4.05 = 9.27 \text{ m}^2$
 總計: 78.06 m^2

小於2m梯廳
 A棟: $0.65 \times 1.05 = 0.68 \text{ m}^2$
 B棟: $0.82 \times 1.25 = 1.03 \text{ m}^2$
 總計: 1.71 m^2

安全梯
 B棟: $2.1 \times 1.05 + 2.665 \times 3.4 + 3.17 \times 3.4 = 22.04 \text{ m}^2$
 F棟: $4.27 \times 2.325 + 2.29 \times 3.6 = 18.17 \text{ m}^2$
 總計: 40.21 m^2

特別安全梯
 A棟: $3.42 \times 5.075 = 17.36 \text{ m}^2$
 B棟: $3.42 \times 5.045 = 17.25 \text{ m}^2$
 C棟: $1.8 \times 1.85 + 3.65 \times 4.57 + 0.85 \times 1.11 + 1.98 \times 4.57 + 3.13 \times 0.72 + (0.72 \times 0.72) / 2 + (0.72 \times 0.72) / 2 = 32.77 \text{ m}^2$
 D棟: $4.075 \times 2.89 + 0.495 \times 1.275 + 4.57 \times 2.7 + 0.59 \times 1.05 + 0.35 \times 0.7 = 25.61 \text{ m}^2$
 總計: 92.99 m^2

緊急升降機排煙室
 C棟: $4.5 \times 2.39 + 0.4 \times 1.45 = 11.34 \text{ m}^2$
 D棟: $4.085 \times 2.45 + 1.15 \times 1.425 = 11.65 \text{ m}^2$
 總計: 22.99 m^2

緊急升降機
 A棟: $2.7 \times 2.5 = 6.75 \text{ m}^2$
 C棟: $2.45 \times 2.55 = 6.25 \text{ m}^2$
 D棟: $2.45 \times 2.5 = 6.13 \text{ m}^2$
 總計: 19.13 m^2

電梯間
 A棟: $2.35 \times 2.15 = 5.05 \text{ m}^2$
 B棟: $2.17 \times 2.4 = 5.21 \text{ m}^2$
 D棟: $2.1 \times 2.35 = 4.94 \text{ m}^2$
 F棟: $2.1 \times 2 = 4.20 \text{ m}^2$
 總計: 19.40 m^2

管道間
 A棟: $0.55 \times 1.65 + 0.55 \times 1.65 = 1.82 \text{ m}^2$
 D棟: $2.45 \times 1.535 = 3.76 \text{ m}^2$
 總計: 5.58 m^2

二、面積計算檢討
 樓地板面積計算
 $1146.58 + 78.06 + 1.71 + 40.21 + 92.99 + 22.99 + 19.13 + 19.40 + 5.58 = 1426.65 \text{ m}^2$
 陽台面積檢討
 $134.36 \text{ m}^2 < 1426.65 \times 10\% = 142.67 \text{ m}^2 \dots \text{OK}$
 梯廳面積檢討
 $78.06 \text{ m}^2 < 1426.65 \times 10\% = 142.67 \text{ m}^2 \dots \text{OK}$
 陽台+梯廳面積檢討
 $134.36 + 78.06 = 212.42 \text{ m}^2 < 1426.65 \times 15\% = 214.00 \text{ m}^2 \dots \text{OK}$
 設備間面積檢討
 $40.21 + 92.99 + 22.99 + 19.13 + 5.58 = 180.90 \text{ m}^2$
 當層樓地板面積 1426.65 m^2
 當層容積樓地板面積
 $1426.65 \times 78.06 / 180.90 = 1167.69 \text{ m}^2$

三、當層戶數檢討 14戶

四、緊急升降機設置檢討
 A,B,C三棟建築物為21層規劃(檢討11-21層)
 A,B棟 $(86.31 + 77.60 + 68.86 + 66.76 + 79.35 + 94.57) \times 11 = 5207.95 \text{ m}^2 > 500 \text{ m}^2$ (設置緊急升降機)
 C棟 $(92.16 + 88.75) \times 11 = 1990.01 \text{ m}^2 > 500 \text{ m}^2$ (設置緊急升降機)
 D棟一棟建築物為19層規劃
 $(93.93 + 101.63) \times 9 = 1760.04 \text{ m}^2 > 500 \text{ m}^2$ (設置緊急升降機)
 E,F棟兩棟建築物為13層規劃
 E棟 $(79.21 + 79.95) \times 2 = 318.32 \text{ m}^2 < 500 \text{ m}^2$ (免設緊急升降機)

五、排煙室面積檢討
 A,B棟 $2.68 \times 3.76 = 10.08 \text{ m}^2 > 10.00 \text{ m}^2 \dots \text{OK}$ (以梯廳計算)
 C棟 $2.39 \times 4.5 + 0.4 \times 1.45 = 11.34 \text{ m}^2 > 10.00 \text{ m}^2 \dots \text{OK}$ (以梯廳計算)
 D棟 $4.085 \times 2.45 + 1.15 \times 1.425 = 11.65 \text{ m}^2 > 10.00 \text{ m}^2 \dots \text{OK}$ (以梯廳計算)

六、特別安全梯面積檢討(居室面積)
 A,B棟
 $(86.31 + 77.60 + 68.86 + 66.76 + 79.35 + 94.57) \times 3\% = 14.20 \text{ m}^2$
 $(17.36 + 17.25 + 10.08) = 44.69 \text{ m}^2 > 14.20 \text{ m}^2 \dots \text{OK}$
 C棟
 $(92.16 + 88.75) \times 3\% = 5.43 \text{ m}^2 \dots \text{OK}$
 $(32.77 + 11.34) = 44.11 \text{ m}^2 > 5.43 \text{ m}^2 \dots \text{OK}$
 D棟
 $25.61 + 11.65 = 37.26 \text{ m}^2 > (96.93 + 11.63) \times 3\% = 3.26 \text{ m}^2 \dots \text{OK}$

七、樓梯及平台寬度檢討(居室面積)
 A,B棟
 $86.31 + 77.60 + 68.86 + 66.76 + 79.35 + 94.57 = 473.45 \text{ m}^2 > 200 \text{ m}^2$
 (樓梯寬度應達120cm)
 C棟 $92.16 + 88.75 = 180.91 \text{ m}^2 < 200 \text{ m}^2$
 D棟 $96.93 + 101.63 = 198.56 \text{ m}^2 < 200 \text{ m}^2$
 E棟 $79.21 + 79.95 = 159.16 \text{ m}^2 < 200 \text{ m}^2$
 F棟 $67.37 + 67.13 = 134.50 \text{ m}^2 < 200 \text{ m}^2$

- X1-19 居室
- X162 免計容積陽台
- Z1-19 管道間
- Z162 安全梯
- Z162 小於2m梯廳
- Z162 梯廳
- Z162 特別安全梯
- Z162 緊急升降機
- Z162 緊急升降機排煙室
- Z162 電梯間



圖11-32 十二層面積計算圖(S=1/300)

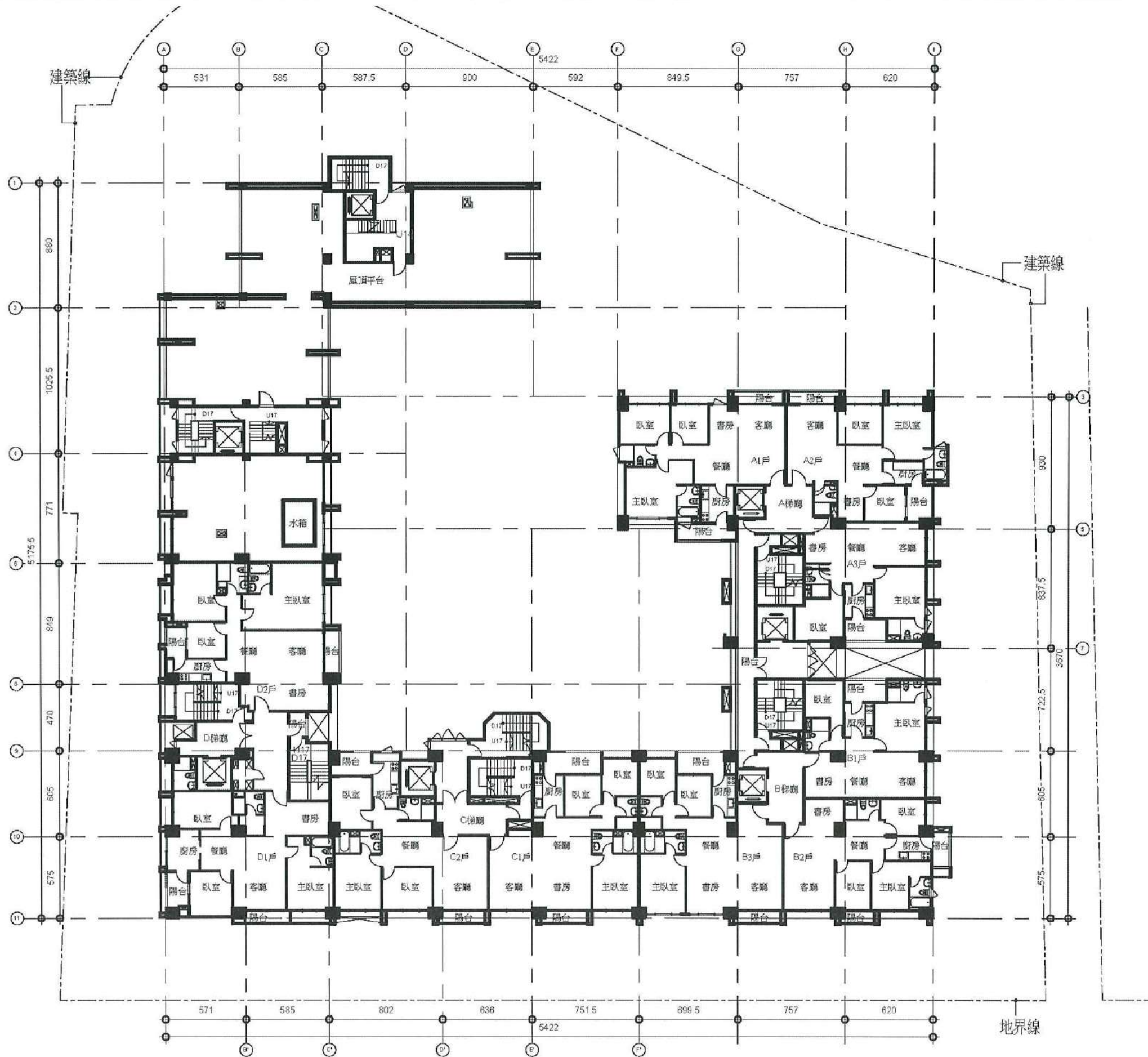
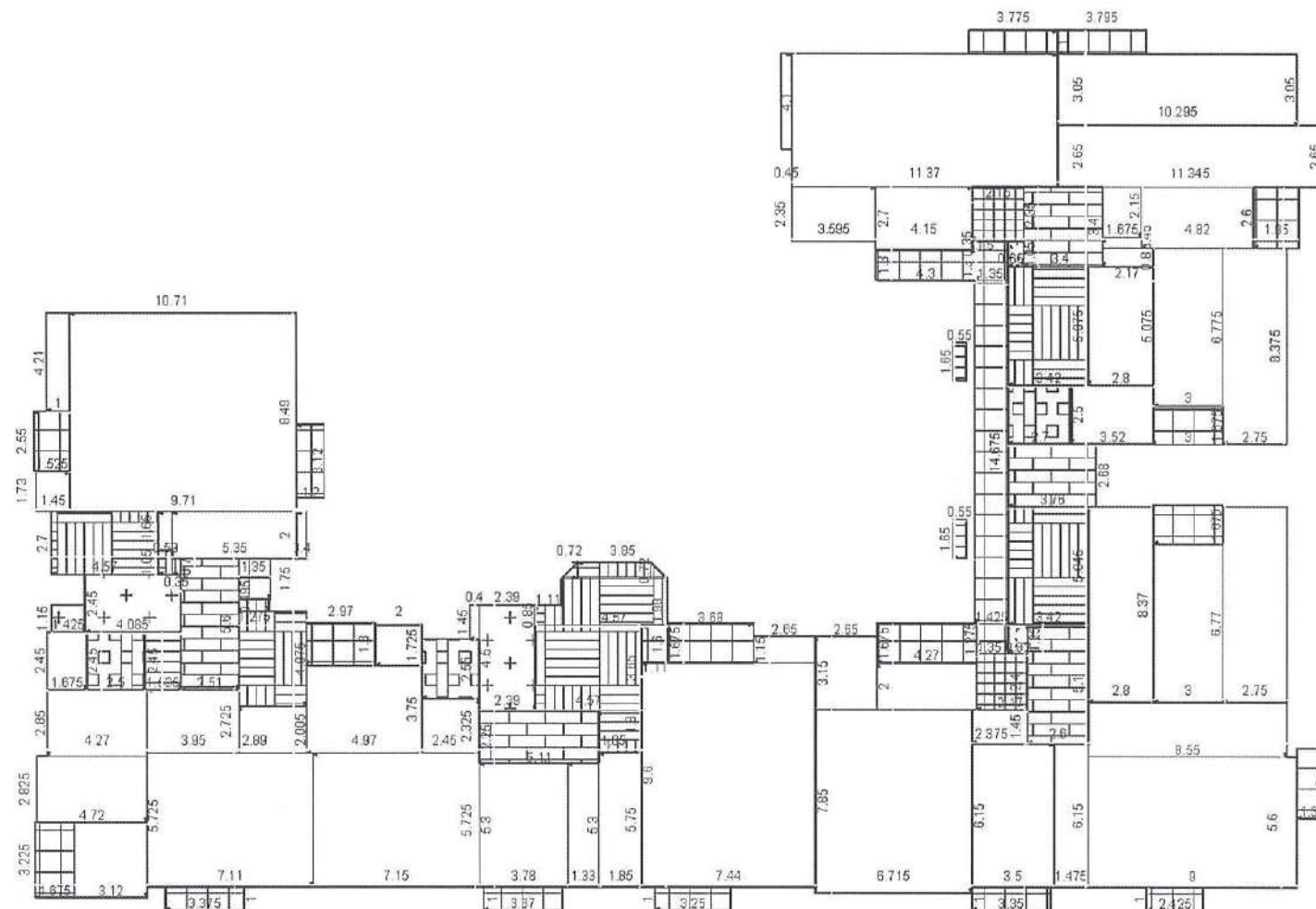


圖11-33 十四層平面圖(S=1/300)



二、面積計算檢討
樓地板面積計算
 $852.92+60.46+1.71+92.99+22.99+19.13+10.26+5.58=1066.04 \text{ m}^2$
陽台面積檢討
 $108.87 \text{ m}^2 < 1066.04 \times 10\% = 106.6 \text{ m}^2 \dots \text{OK}$
梯廳面積檢討
 $60.46 \text{ m}^2 < 1066.04 \times 10\% = 106.6 \text{ m}^2 \dots \text{OK}$
陽台+梯廳面積檢討
 $108.87+60.46=169.33 \text{ m}^2 > 1066.04 \times 15\% = 159.91 \text{ m}^2$
 $169.33-159.91=9.42 \text{ m}^2$ (計入容積)
設備間面積檢討
 $92.99+22.99+19.13+5.58 = 140.69 \text{ m}^2$
蓋層樓地板面積 1066.04 m^2
蓋層容積樓地板面積
 $1066.04-60.46-140.69=864.89 \text{ m}^2$

三、蓋層戶數檢討 10 戶
四、緊急升降機設置檢討
A、B、C 棟建築物為 21 層規畫(檢討 11~21 層)
A、B 棟 $(86.31+77.60+68.86+66.76+79.35+94.57) \times 11 = 5207.95 \text{ m}^2 > 500 \text{ m}^2$ (設置緊急升降機)
C 棟 $(92.16+88.75) \times 11 = 1990.01 \text{ m}^2 > 500 \text{ m}^2$ (設置緊急升降機)
D 棟(棟建築物為 19 層規畫)
 $(93.93+101.63) \times 9 = 1760.04 \text{ m}^2 > 500 \text{ m}^2$ (設置緊急升降機)
五、排煙室面積檢討
A、B 棟 $2.68 \times 3.76 = 10.08 \text{ m}^2 > 10.00 \text{ m}^2 \dots \text{OK}$ (以梯廳計算)
C 棟 $2.39 \times 4.5 + 0.4 \times 1.45 = 11.34 \text{ m}^2 > 10.00 \text{ m}^2 \dots \text{OK}$ (以梯廳計算)
D 棟 $4.085 \times 2.45 + 1.15 \times 1.425 = 11.65 \text{ m}^2 > 10.00 \text{ m}^2 \dots \text{OK}$ (以梯廳計算)

六、特別安全梯面積檢討
A、B 棟
 $(86.31+77.60+68.86+66.76+79.35+94.57) \times 3\% = 14.20 \text{ m}^2$
 $(17.36+17.25+10.08) = 44.69 \text{ m}^2 > 14.20 \text{ m}^2 \dots \text{OK}$
C 棟
 $(92.16+88.75) \times 3\% = 5.43 \text{ m}^2 \dots \text{OK}$
 $(32.77+11.34) = 44.11 \text{ m}^2 > 5.43 \text{ m}^2 \dots \text{OK}$
D 棟
 $25.61+11.65 = 37.26 \text{ m}^2 > (96.93+11.63) \times 3\% = 3.26 \text{ m}^2 \dots \text{OK}$
七、樓梯及平台寬度檢討(居室面積)
A、B 棟
 $86.31+77.60+68.86+66.76+79.35+94.57 = 473.45 \text{ m}^2 > 200 \text{ m}^2$
(樓梯寬度應達 120cm)
C 棟 $92.16+88.75 = 180.91 \text{ m}^2 < 200 \text{ m}^2$
D 棟 $96.93+101.63 = 198.56 \text{ m}^2 < 200 \text{ m}^2$

居室
A1: $4.15 \times 2.7 + 3.595 \times 2.35 + 11.37 \times 5.7 + 0.45 \times 4.1 = 86.31 \text{ m}^2$
A2: $3.05 \times 10.295 + 2.65 \times 11.345 + 2.15 \times 1.675 + 4.82 \times 2.6 = 77.60 \text{ m}^2$
A3: $2.75 \times 8.375 + 3 \times 6.775 + 2.5 \times 3.52 + 0.45 \times 1.675 + 0.8 \times 2.17 + 5.075 \times 2.8 = 68.86 \text{ m}^2$
B1: $2.8 \times 8.37 + 3 \times 6.77 + 2.75 \times 8.37 = 66.76 \text{ m}^2$
B2: $1.475 \times 6.15 + 9 \times 5.6 + 2.325 \times 8.55 = 79.35 \text{ m}^2$
B3: $3.5 \times 6.15 + 2 \times 4.27 + 3.15 \times 2.65 + 2.375 \times 1.45 + 7.85 \times 6.715 = 94.57 \text{ m}^2$
C1: $1.33 \times 5.3 + 1.85 \times 5.75 + 2.65 \times 1.15 + 7.44 \times 9.6 = 92.16 \text{ m}^2$
C2: $2 \times 1.725 + 4.97 \times 3.75 + 2.325 \times 2.45 + 3.78 \times 5.3 + 7.15 \times 5.725 = 88.75 \text{ m}^2$
D1: $2.005 \times 2.89 + 2.45 \times 1.675 + 3.225 \times 3.12 + 5.725 \times 7.11 + 2.85 \times 4.27 + 3.95 \times 2.725 + 2.825 \times 4.72 = 96.93 \text{ m}^2$
D2: $0.59 \times 1.65 + 0.4 \times 2 + 5.35 \times 2 + 1.45 \times 1.73 + 1 \times 4.21 + 9.71 \times 8.49 = 101.63 \text{ m}^2$
總計: 852.92 m^2

免計容積陽台
AB 棟: $1.275 \times 1.35 + 14.675 \times 1.425 + 1.3 \times 1.35 + 0.35 \times 1.5 = 24.91 \text{ m}^2$
A1: $4.3 \times 1.3 + 3.775 \times 1 = 9.37 \text{ m}^2$
A2: $3.795 \times 1 + 1.95 \times 2.6 = 8.87 \text{ m}^2$
A3: $1.675 \times 3 = 5.03 \text{ m}^2$
B1: $3 \times 1.675 = 5.03 \text{ m}^2$
B2: $1.35 \times 3 + 2.425 \times 1 = 6.48 \text{ m}^2$
B3: $4.27 \times 1.675 + 3.35 \times 1 = 10.50 \text{ m}^2$
C1: $1.11 \times 1.6 + 3.68 \times 1.675 + 3.25 \times 1 = 11.19 \text{ m}^2$
C2: $1.8 \times 2.97 + 3.37 \times 1 = 8.72 \text{ m}^2$
D1: $3.375 \times 1 + 1.675 \times 3.225 = 8.78 \text{ m}^2$
D2: $1.2 \times 3.12 + 1.525 \times 2.55 = 7.63 \text{ m}^2$
D 棟: $1.75 \times 1.35 = 2.36 \text{ m}^2$
總計: 108.87 m^2

梯廳
A 棟: $3.4 \times 3.4 + 3.76 \times 2.68 = 21.64 \text{ m}^2$
B 棟: $2.6 \times 5.1 = 13.26 \text{ m}^2$
C 棟: $2.25 \times 5.11 = 11.50 \text{ m}^2$
D 棟: $5.6 \times 2.51 = 14.06 \text{ m}^2$
總計: 60.46 m^2

小於 2m 梯廳
A 棟: $0.65 \times 1.05 = 0.68 \text{ m}^2$
B 棟: $0.82 \times 1.25 = 1.03 \text{ m}^2$
總計: 1.71 m^2

特別安全梯
A 棟: $3.42 \times 5.075 = 17.36 \text{ m}^2$
B 棟: $3.42 \times 5.045 = 17.25 \text{ m}^2$
C 棟: $1.8 \times 1.85 + 3.65 \times 4.57 + 0.85 \times 1.11 + 1.98 \times 4.57 + 3.13 \times 0.72 + (0.72 \times 0.72) / 2 = 32.77 \text{ m}^2$
D 棟: $4.075 \times 2.89 + 0.495 \times 1.275 + 4.57 \times 2.7 + 0.59 \times 1.05 + 0.35 \times 0.7 = 25.61 \text{ m}^2$
總計: 92.99 m^2

緊急升降機排煙室
C 棟: $4.5 \times 2.59 + 0.4 \times 1.45 = 11.34 \text{ m}^2$
D 棟: $4.085 \times 2.45 + 1.15 \times 1.425 = 11.65 \text{ m}^2$
總計: 22.99 m^2

緊急升降機
A 棟: $2.7 \times 2.5 = 6.75 \text{ m}^2$
C 棟: $2.45 \times 2.55 = 6.25 \text{ m}^2$
D 棟: $2.45 \times 2.5 = 6.13 \text{ m}^2$
總計: 19.13 m^2

電梯間
A 棟: $2.35 \times 2.15 = 5.05 \text{ m}^2$
B 棟: $2.17 \times 2.4 = 5.21 \text{ m}^2$
總計: 10.26 m^2

管道間
A 棟: $0.55 \times 1.65 + 0.55 \times 1.65 = 1.82 \text{ m}^2$
D 棟: $2.45 \times 1.535 = 3.76 \text{ m}^2$
總計: 5.58 m^2

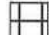
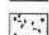
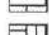
-  X1-19 居室
-  X162 免計容積陽台
-  Z1-19 管道間
-  Z162 小於 2m 梯廳
-  Z162 梯廳
-  Z162 特別安全梯
-  Z162 緊急升降機
-  Z162 緊急升降機排煙室
-  Z162 電梯間

圖 11-34 十四、十六、十八層面積計算圖(S=1/300)

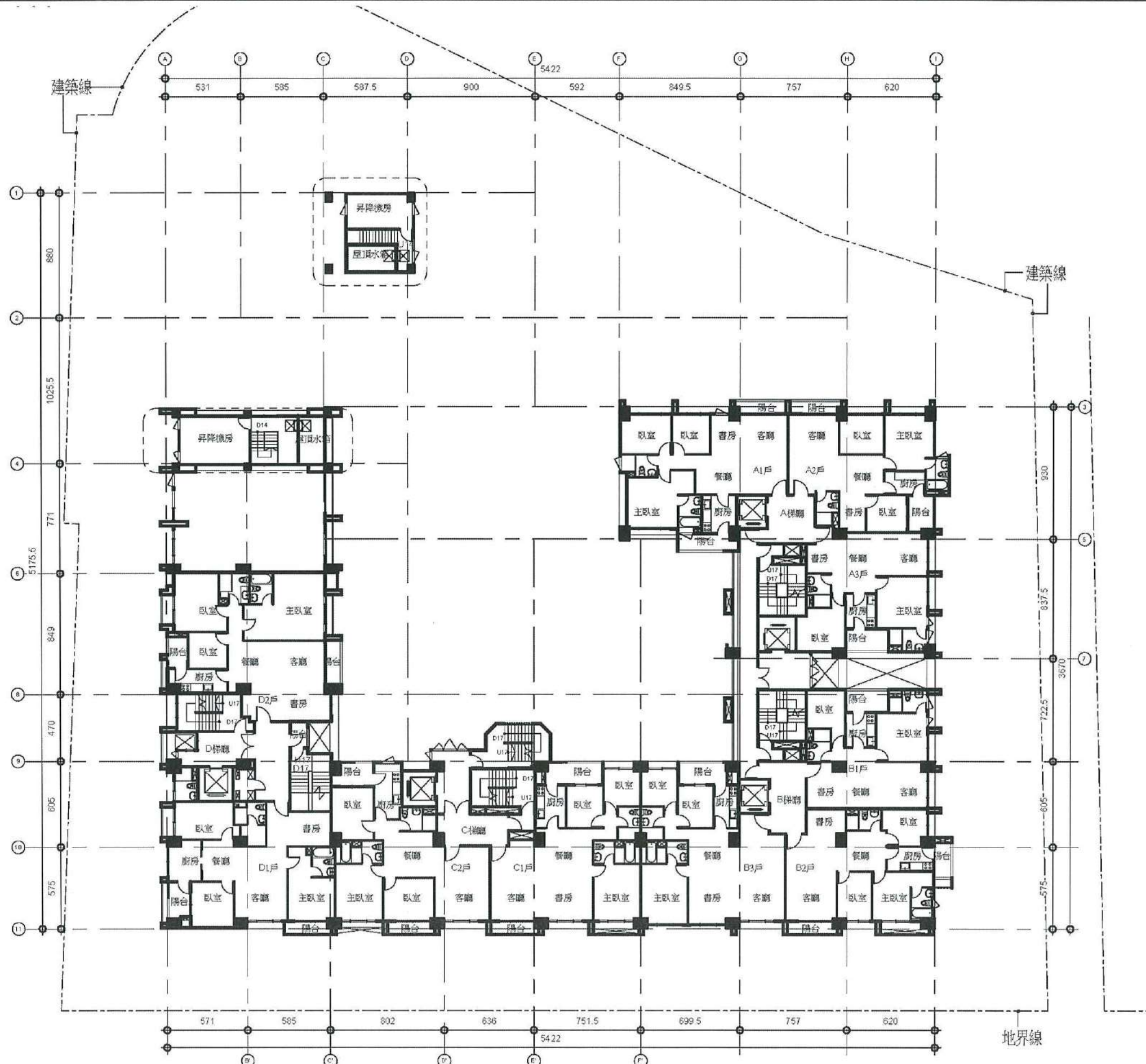


圖11-35 十五層平面圖(S=1/300)

合康工程顧問股份有限公司

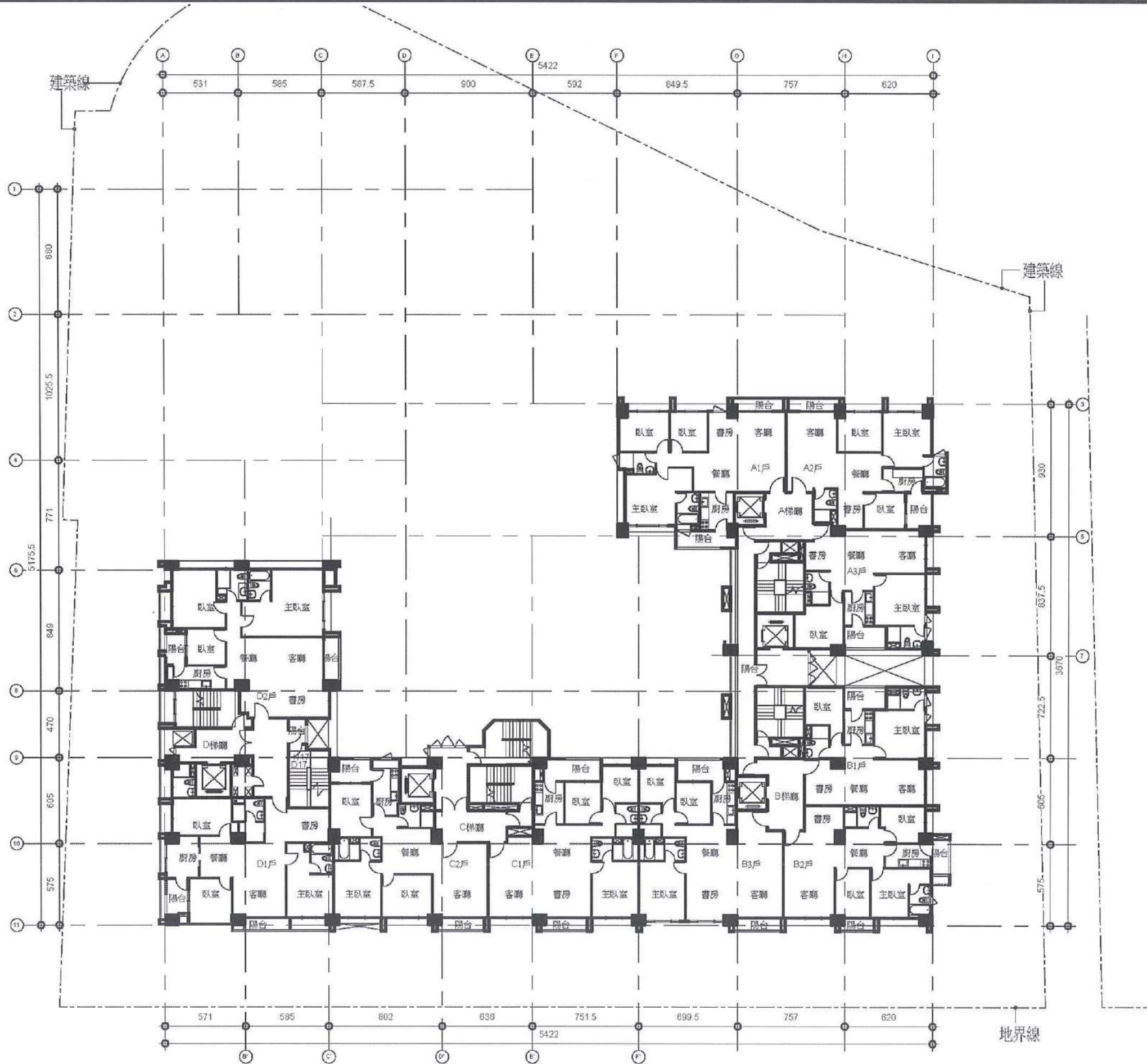


圖11-36 十六、十八層平面圖(S=1/300)

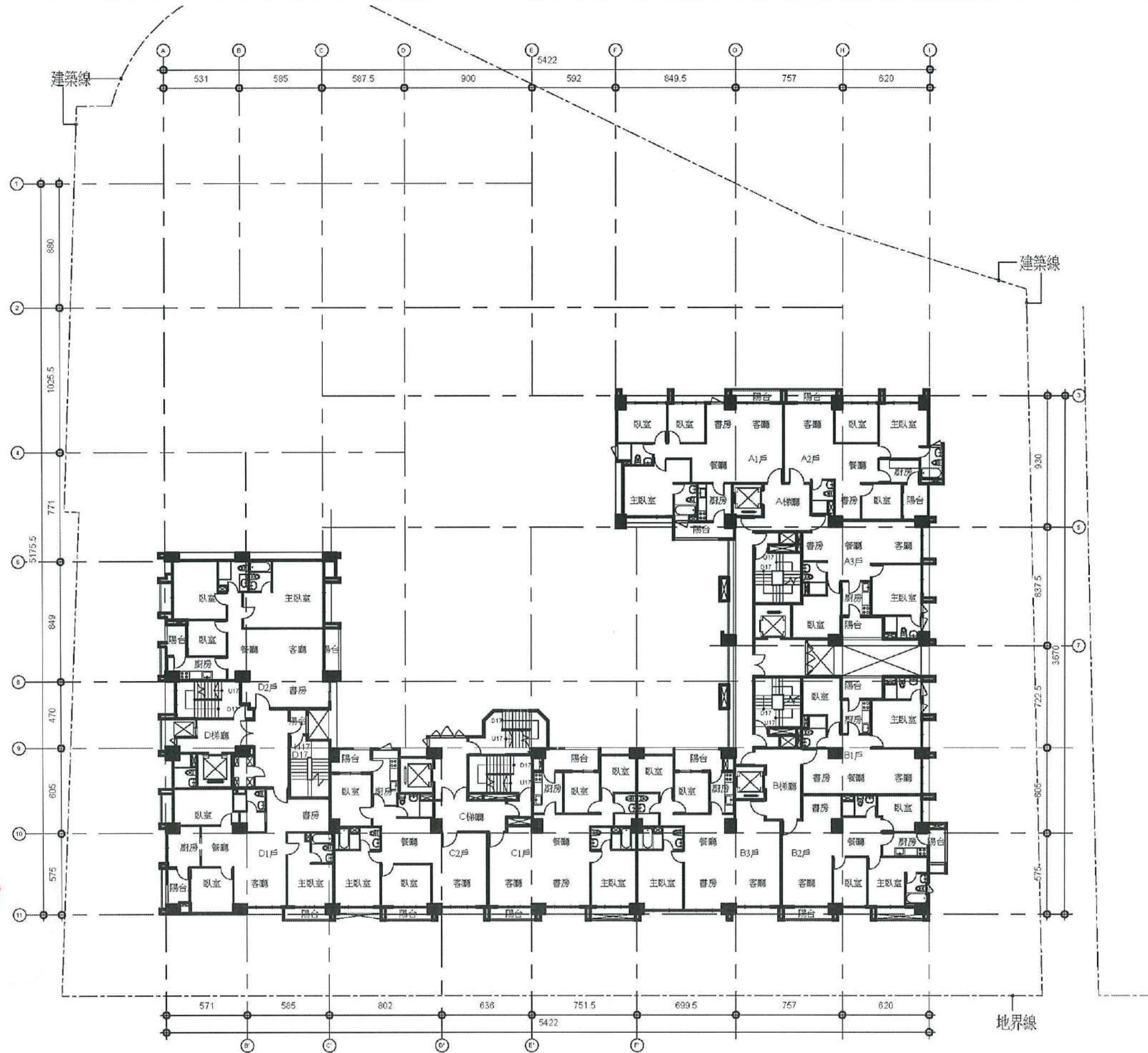
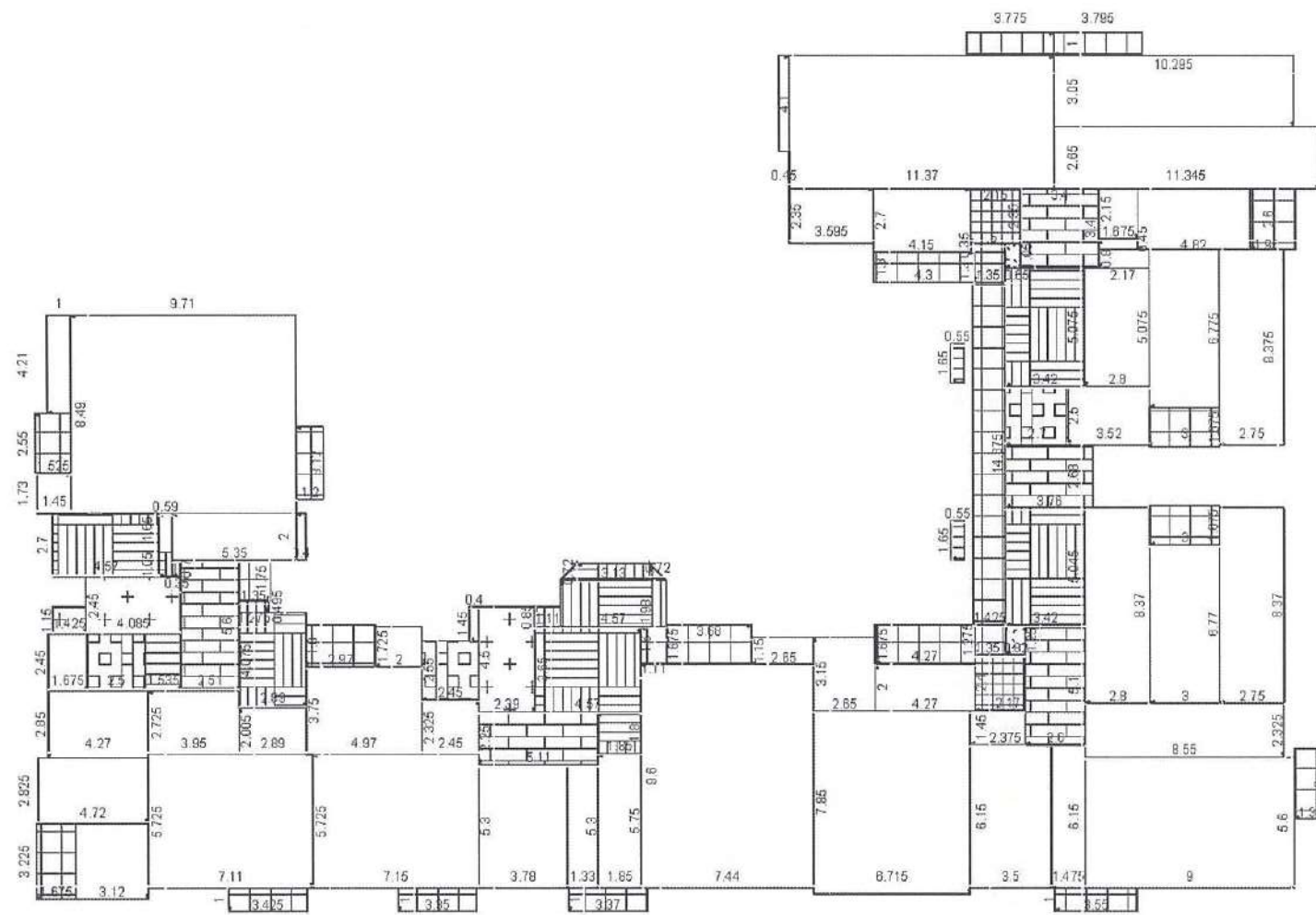


圖11-37 十七、十九層平面圖(S=1/300)



二、面積計算檢核
 樓地板面積計算
 $852.92+60.46+1.71+92.99+22.99+19.13+10.26+5.58=1066.04 \text{ m}^2$
 陽台面積檢核
 $105.79 \text{ m}^2 > 1066.04 * 10\% = 106.60 \text{ m}^2$
 $105.79 - 106.60 = 0.19 \text{ m}^2$ (計入樓地板面積)
 梯廳面積檢核
 $60.45 \text{ m}^2 < 1066.04 * 10\% = 106.60 \text{ m}^2$...OK
 陽台+梯廳面積檢核
 $105.60+60.46=167.06 \text{ m}^2 > 1066.04 * 15\% = 159.91 \text{ m}^2$
 $167.06 - 159.91 = 7.15 \text{ m}^2$ (計入容積樓地板面積)
 設備間面積檢核
 $92.99+22.99+19.13+5.58 = 140.69 \text{ m}^2$
 當層樓地板面積 1066.04 m^2
 當層容積樓地板面積
 $1066.04-60.46-140.69+0.19+7.15 = 872.23 \text{ m}^2$

三、當層戶數檢核 10 戶
 四、緊急升降機設置檢核
 A,B,C 三棟建築物為 21 層規劃(檢核 11-21 層)
 A,B 棟 $(86.31+77.60+68.86+66.76+79.35+94.57) * 11 = 5207.95 \text{ m}^2 > 500 \text{ m}^2$ (設置緊急升降機)
 C 棟 $(92.16+88.75) * 11 = 1990.01 \text{ m}^2 > 500 \text{ m}^2$ (設置緊急升降機)
 D 棟一棟建築物為 19 層規劃
 $(93.93+101.63) * 9 = 1760.04 \text{ m}^2 > 500 \text{ m}^2$ (設置緊急升降機)
 五、排煙室面積檢核
 A,B 棟 $2.68 * 3.76 = 10.08 \text{ m}^2 > 10.00 \text{ m}^2$...OK(以梯廳計算)
 C 棟 $2.39 * 4.5 + 0.4 * 1.45 = 11.34 \text{ m}^2 > 10.00 \text{ m}^2$...OK(以梯廳計算)
 D 棟 $4.085 * 2.45 + 1.15 * 1.425 = 11.65 \text{ m}^2 > 10.00 \text{ m}^2$...OK(以梯廳計算)

六、特別安全梯面積檢核
 A,B 棟
 $(86.31+77.60+68.86+66.76+79.35+94.57) * 3\% = 14.20 \text{ m}^2$
 $(17.36+17.25+10.08)=44.69 \text{ m}^2 > 14.20 \text{ m}^2$...OK
 C 棟
 $(92.16+88.75) * 3\% = 5.43 \text{ m}^2$...OK
 $(32.77+11.34)=44.11 \text{ m}^2 > 5.43 \text{ m}^2$...OK
 D 棟
 $25.61+11.65 = 37.26 \text{ m}^2 > (96.93+11.63) * 3\% = 3.26 \text{ m}^2$...OK
 七、樓梯及平台寬度檢核(居室面積)
 A,B 棟
 $86.31+77.60+68.86+66.76+79.35+94.57 = 473.45 \text{ m}^2 > 200 \text{ m}^2$
 (樓梯寬度應 $\geq 120 \text{ cm}$)
 C 棟 $92.16+88.75 = 180.91 \text{ m}^2 < 200 \text{ m}^2$
 D 棟 $96.93+101.63 = 198.56 \text{ m}^2 < 200 \text{ m}^2$

居室
 A1: $4.15 * 2.7 + 3.595 * 2.35 + 11.37 * 5.7 + 0.45 * 4.1 = 86.31 \text{ m}^2$
 A2: $3.05 * 10.295 + 2.65 * 11.845 + 2.15 * 1.675 + 4.82 * 2.6 = 77.60 \text{ m}^2$
 A3: $2.75 * 8.375 + 3 * 8.775 + 2.5 * 3.52 + 0.45 * 1.875 + 0.8 * 2.17 + 5.075 * 2.8 = 68.86 \text{ m}^2$
 B1: $2.8 * 8.37 + 3 * 6.77 + 2.75 * 8.37 = 66.76 \text{ m}^2$
 B2: $1.475 * 6.15 + 9 * 5.6 + 2.325 * 8.55 = 79.35 \text{ m}^2$
 B3: $3.5 * 6.15 + 2 * 4.27 + 3.15 * 2.65 + 2.375 * 1.45 + 7.85 * 6.715 = 94.57 \text{ m}^2$
 C1: $1.33 * 5.3 + 1.85 * 5.75 + 2.65 * 1.15 + 7.44 * 9.6 = 92.16 \text{ m}^2$
 C2: $2 * 1.725 + 4.97 * 3.75 + 2.325 * 2.45 + 3.78 * 5.3 + 7.15 * 5.725 = 88.75 \text{ m}^2$
 D1: $2.005 * 2.89 + 2.45 * 1.675 + 3.225 * 3.12 + 5.725 * 7.11 + 2.85 * 4.27 + 3.95 * 2.725 + 2.825 * 4.72 = 96.93 \text{ m}^2$
 D2: $0.59 * 1.65 + 0.4 * 2 + 5.35 * 2 + 1.45 * 1.73 + 1 * 4.21 + 9.71 * 8.49 = 101.63 \text{ m}^2$
 總計: 852.92 m^2

免計容積陽台
 AB 棟: $1.275 * 1.35 + 14.675 * 1.425 + 1.3 * 1.35 + 0.35 * 1.5 = 24.91 \text{ m}^2$
 A1: $4.3 * 1.3 + 3.775 * 1 = 9.37 \text{ m}^2$
 A2: $3.795 * 1 + 1.95 * 2.6 = 8.87 \text{ m}^2$
 A3: $1.675 * 3 = 5.03 \text{ m}^2$
 B1: $3 * 1.675 = 5.03 \text{ m}^2$
 B2: $1.35 * 3 + 3.55 * 1 = 7.60 \text{ m}^2$
 B3: $4.27 * 1.675 = 7.15 \text{ m}^2$
 C1: $1.11 * 1.6 + 3.68 * 1.675 + 1 * 3.37 = 11.31 \text{ m}^2$
 C2: $1.8 * 2.97 + 1 * 3.35 = 8.70 \text{ m}^2$
 D1: $1 * 3.425 + 1.675 * 3.225 = 8.83 \text{ m}^2$
 D2: $1.2 * 3.12 + 1.525 * 2.55 = 7.63 \text{ m}^2$
 D 棟: $1.75 * 1.35 = 2.36 \text{ m}^2$
 總計: 106.79 m^2

梯廳
 A 棟: $3.4 * 3.4 + 3.76 * 2.68 = 21.64 \text{ m}^2$
 B 棟: $2.6 * 5.1 = 13.26 \text{ m}^2$
 C 棟: $2.25 * 5.11 = 11.50 \text{ m}^2$
 D 棟: $5.6 * 2.51 = 14.06 \text{ m}^2$
 總計: 60.46 m^2

小於 2m 梯廳
 A 棟: $0.65 * 1.05 = 0.68 \text{ m}^2$
 B 棟: $0.82 * 1.25 = 1.03 \text{ m}^2$
 總計: 1.71 m^2

特別安全梯
 A 棟: $3.42 * 5.075 = 17.36 \text{ m}^2$
 B 棟: $3.42 * 5.045 = 17.25 \text{ m}^2$
 C 棟: $1.8 * 1.85 + 3.65 * 4.57 + 0.85 * 1.11 + 1.93 * 4.57 + 3.13 * 0.72 + (0.72 * 0.72) / 2 + (0.72 * 0.72) / 2 = 32.77 \text{ m}^2$
 D 棟: $4.075 * 2.89 + 0.495 * 1.275 + 4.57 * 2.7 + 0.59 * 1.05 + 0.35 * 0.7 = 25.61 \text{ m}^2$
 總計: 92.99 m^2

緊急升降機排煙室
 C 棟: $4.5 * 2.39 + 0.4 * 1.45 = 11.34 \text{ m}^2$
 D 棟: $4.085 * 2.45 + 1.15 * 1.425 = 11.65 \text{ m}^2$
 總計: 22.99 m^2

緊急升降機
 A 棟: $2.7 * 2.5 = 6.75 \text{ m}^2$
 C 棟: $2.45 * 2.55 = 6.25 \text{ m}^2$
 D 棟: $2.45 * 2.5 = 6.13 \text{ m}^2$
 總計: 19.13 m^2

電梯間
 A 棟: $2.35 * 2.15 = 5.05 \text{ m}^2$
 B 棟: $2.17 * 2.4 = 5.21 \text{ m}^2$
 總計: 10.26 m^2

管道間
 A 棟: $0.55 * 1.65 + 0.55 * 1.65 = 1.82 \text{ m}^2$
 D 棟: $2.45 * 1.535 = 3.76 \text{ m}^2$
 總計: 5.58 m^2

- X1-19 居室
- X162 免計容積陽台
- Z1-10 屋突面積
- Z1-19 管道間
- Z162 小於 2m 梯廳
- Z162 梯廳
- Z162 特別安全梯
- Z162 緊急升降機
- Z162 緊急升降機排煙室
- Z162 電梯間

圖 11-38 十五、十七、十九層面積計算圖(S=1/300)