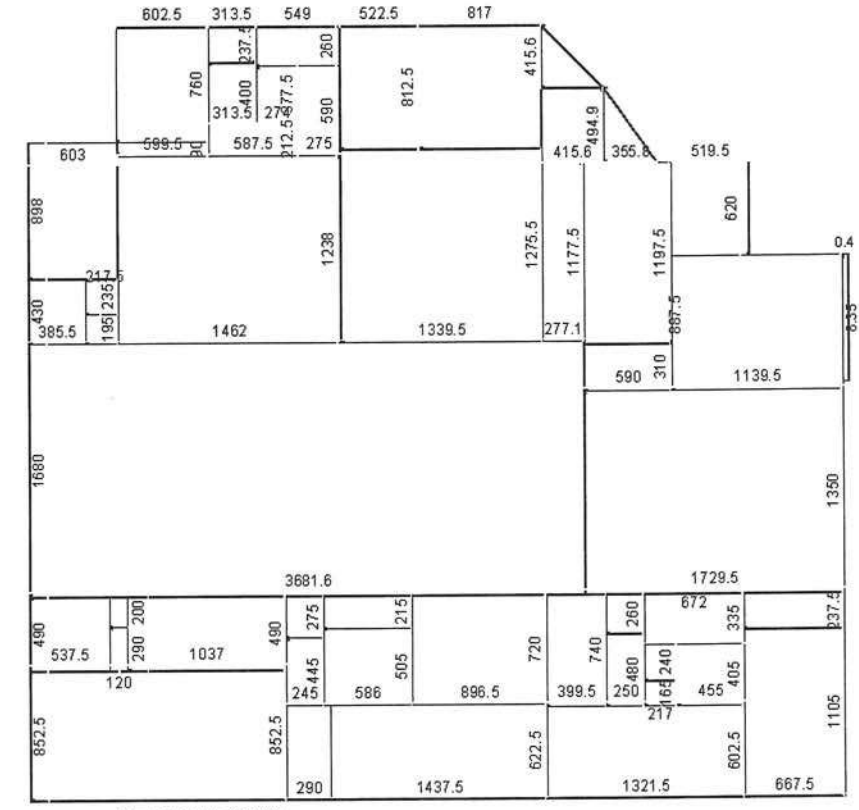
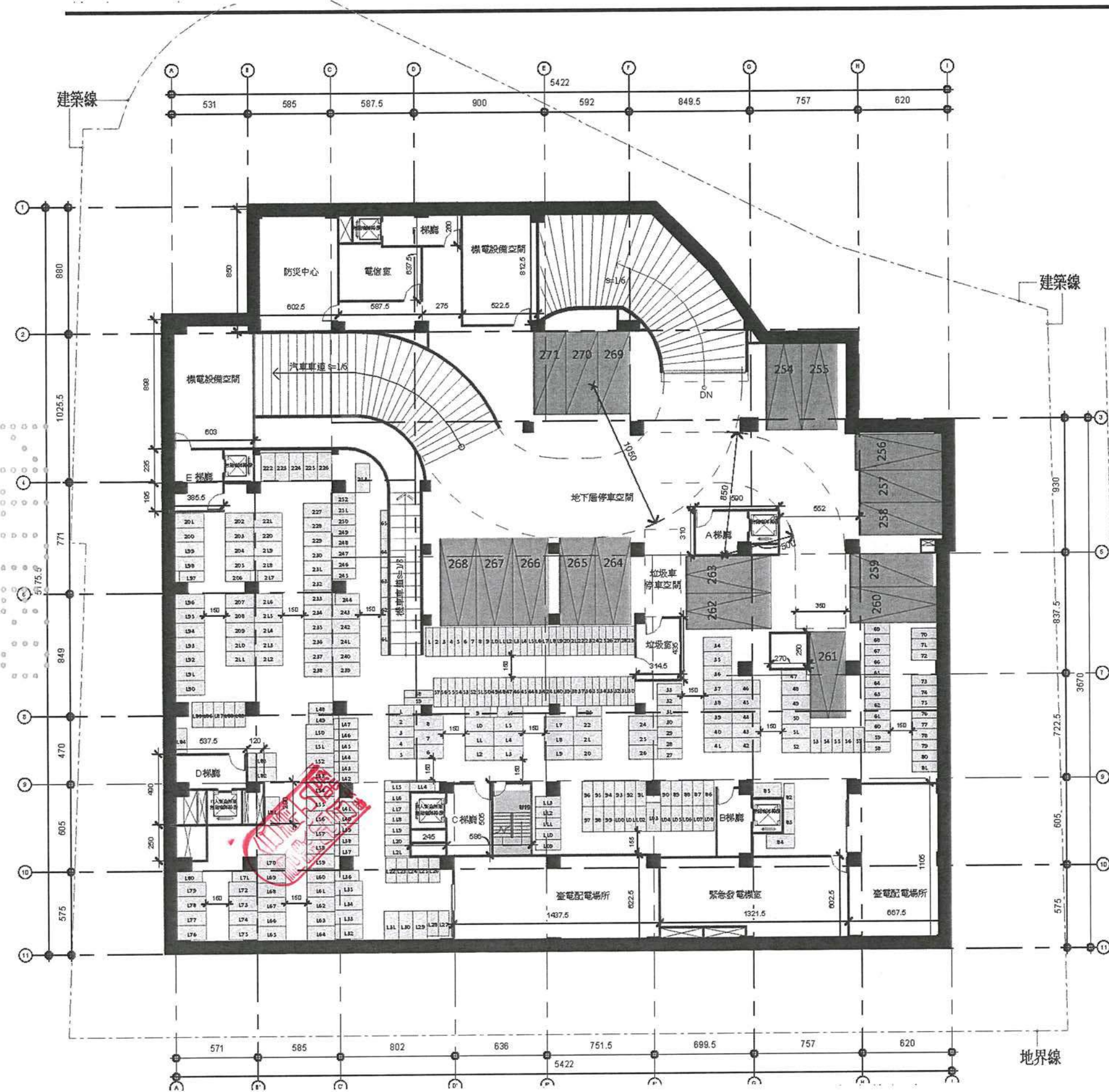


法定停車位

大車位 250x600 48 輛
 小車位 225x575 15 輛

圖6-5 地下二層平面圖(S=1/300)



一地下層樓地板面積計算

停車空間(地下室停車空間)
 全區: $16.945 * 8.525 + 2.9 * 6.225 + 1.2 * 2 + 10.37 * 4.9 + 2.45 * 2.75 + 5.86 * 2.15 + 2.175 * 1.95 + 16.8 * 36.816 + 13.5 * 17.295 + 8.965 * 7.2 + 3.995 * 7.4 + 2.5 * 2.6 + 6.72 * 3.35 + 2.17 * 1.65 + 4.55 * 4.05 + 6.675 * 2.375 + 12.38 * 14.62 + 2.75 * 5.9 + 5.875 * 2.125 + 8.17 * 8.125 + 8.875 * 11.395 + 11.975 * 5.9 + 6.2 * 5.195 + 13.395 * 12.755 + 2.771 * 11.775 + 4.949 * 4.156 + (3.558 * 4.949) / 2 + (4.156 * 4.156) / 2 + 8.35 * 0.4 = 1977.18 \text{ m}^2$
 總計: 1977.18 m²

梯廳+橫電設備
 全區: $7.6 * 6.025 + 0.9 * 5.995 + 3.135 * 4 + 2.74 * 3.775 + 5.225 * 8.125 + 6.03 * 8.98 + 6.675 * 11.05 + 13.215 * 6.025 + 14.375 * 6.225 + 5.9 * 3.1 + 2.17 * 2.4 + 2.5 * 4.8 + 5.375 * 4.9 + 1.2 * 2.9 + 2.45 * 4.45 + 5.86 * 5.05 + 3.855 * 4.3 + 2.175 * 2.35 + 3.135 * 2.375 + 5.49 * 2.6 = 562.75 \text{ m}^2$
 總計: 562.75 m²

$1977.18 + 562.75 = 2539.93 \text{ m}^2$

二地下層法令檢討
 隔控率檢討: $2539.93 / 4256.01 * 100\% = 59.68\% < 70.00\% \dots \text{OK}$

	B1F	B2F	B3F	B4F	B5F	小計
大汽車位 250*600	12	48	48	48	50	206
小汽車位 250*575	6	15	15	14	15	65
小計	18	63	63	62	65	271
大機車位 100*200	128					
小機車位 75*175	125					
小計	253					
自行車位 50*200	64					

法定停車位
 自設停車位
 大車位 250x600 12 輛
 小車位 225x575 6 輛

小汽車位數量檢討: $65 / 271 * 100\% = 23.99\% < 25.00\% \dots \text{OK}$
 自行車數量檢討: $64 > 253 / 4 = 63.25 \dots \text{OK}$
 停車位面積檢討: $271 * 40 + 253 * 4 = 11852.00 \text{ m}^2$
 防空避難室面積: 1639.94m²

機車位(大) 100x200 131 輛
 機車位(小) 75x175 122 輛

地下室容積檢討: $2536.60 * 5 = 12683.00 \text{ m}^2 < 11852 + 1639.94 = 13491.94 \text{ m}^2 \dots \text{OK}$

圖6-6 地下一層平面圖(S=1/300)

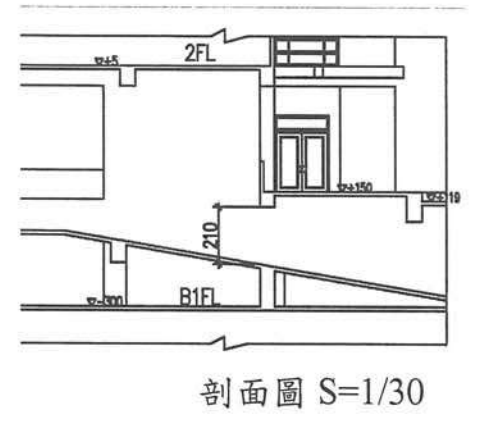
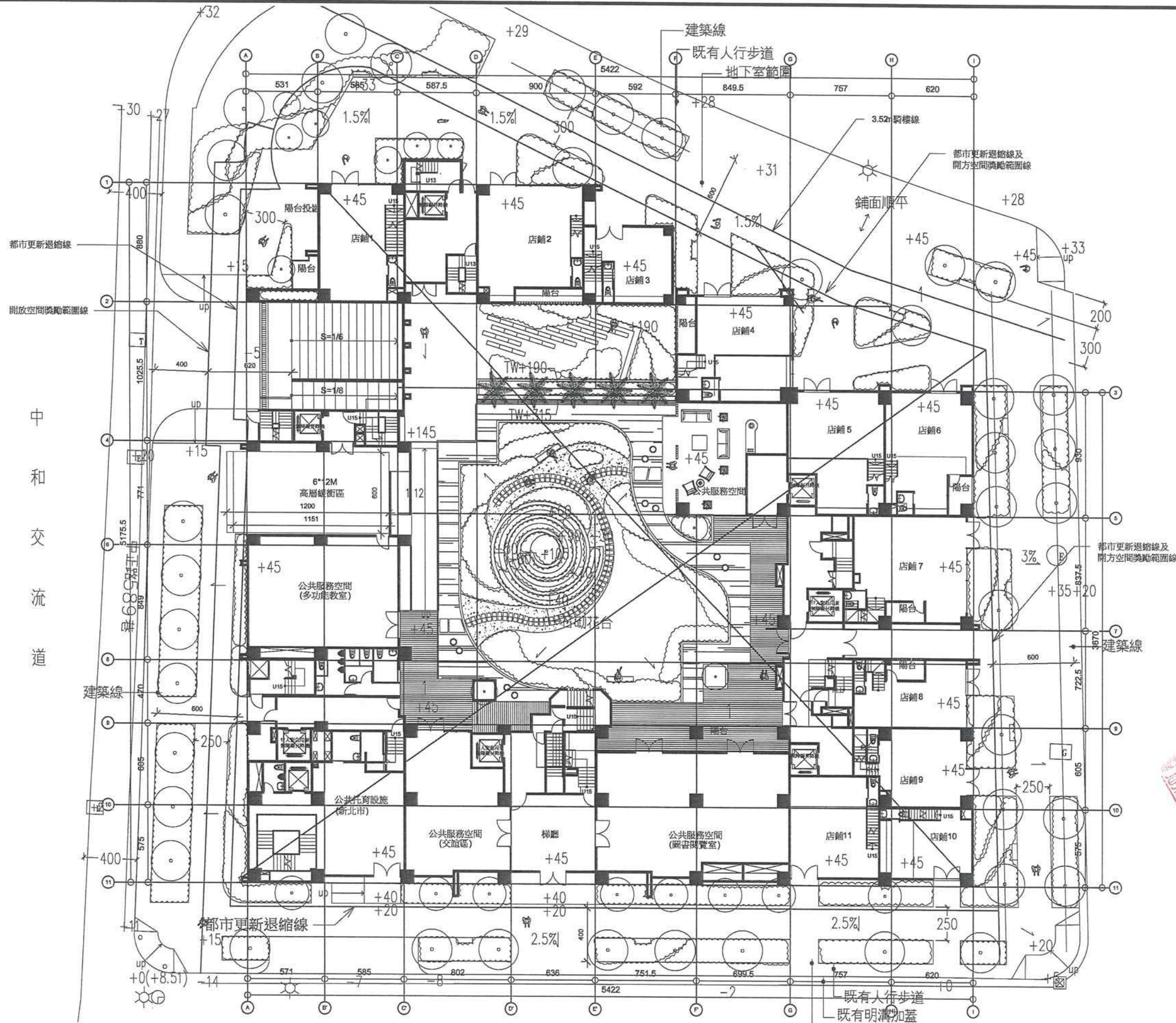
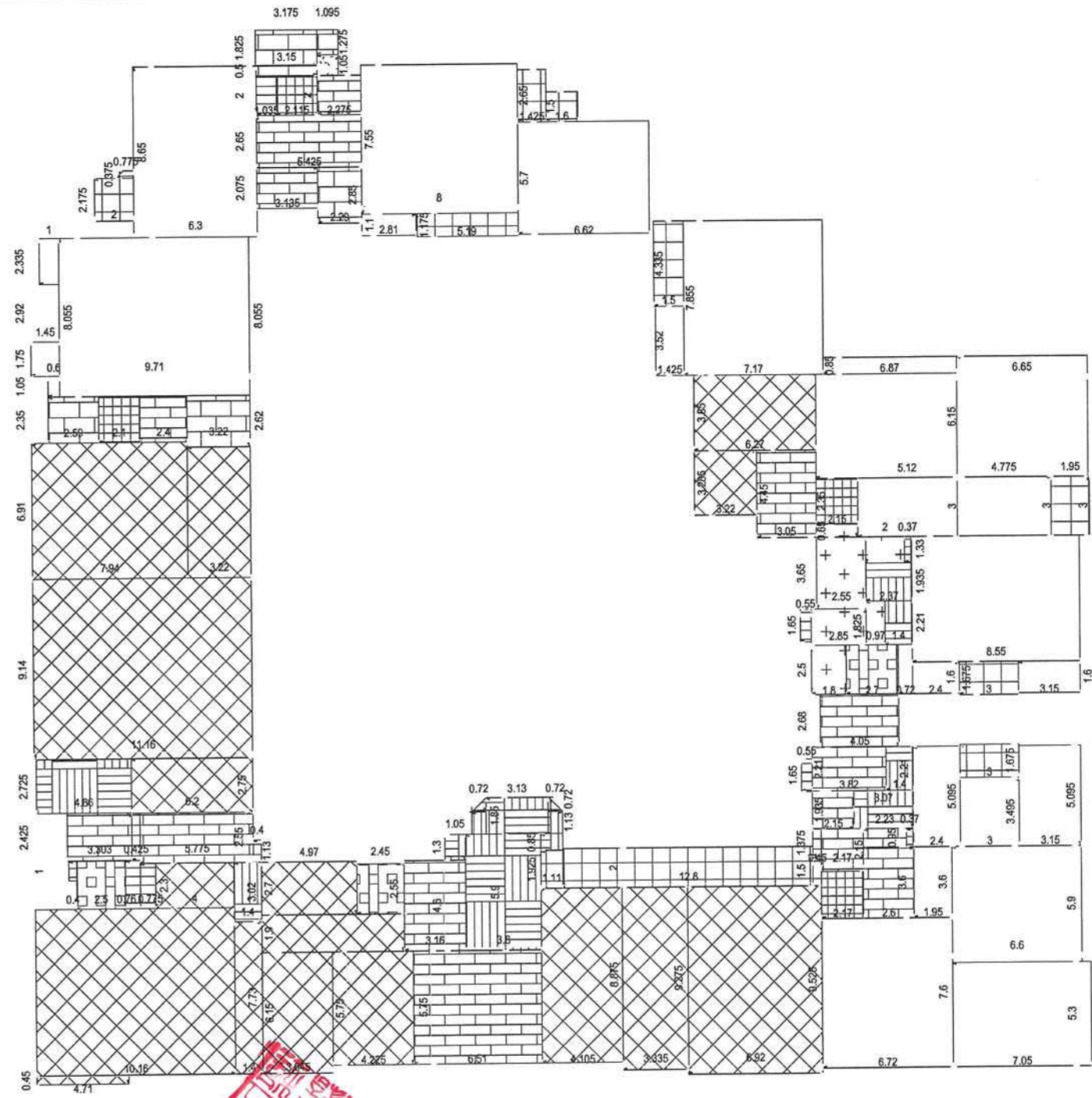


圖6-7 一層平面圖(S=1/300)



一、一層各戶樓地板面積計算

居室
 店舖01: $8.65 \times 6.3 = 54.50 \text{ m}^2$
 店舖02: $2.81 \times 1.1 + 7.55 \times 8 = 63.49 \text{ m}^2$
 店舖03: $6.62 \times 5.7 = 37.73 \text{ m}^2$
 店舖04: $7.17 \times 7.855 + 1.425 \times 3.52 = 61.34 \text{ m}^2$
 店舖05: $5.12 \times 3 + 7.27 \times 5.3 + 6.87 \times 0.85 = 59.73 \text{ m}^2$
 店舖06: $4.775 \times 3 + 6.65 \times 6.15 = 55.22 \text{ m}^2$
 店舖07: $3.15 \times 1.6 + 2.4 \times 1.6 + 0.72 \times 2.5 + 8.55 \times 6.375 = 65.19 \text{ m}^2$
 店舖08: $5.095 \times 3.15 + 3.495 \times 3 + 2.4 \times 5.095 = 38.76 \text{ m}^2$
 店舖09: $1.95 \times 3.6 + 6.6 \times 5.9 = 45.96 \text{ m}^2$
 店舖10: $7.05 \times 5.3 = 37.37 \text{ m}^2$
 店舖11: $6.72 \times 7.6 = 51.07 \text{ m}^2$
 公共托育服務空間: $0.45 \times 4.71 + 1.4 \times 7.73 + 10.16 \times 8.45 + 2.3 \times 4 = 107.99 \text{ m}^2$
 公共服務空間一(圖書閱覽區): $6.92 \times 9.525 + 3.335 \times 9.275 + 4.105 \times 8.875 = 133.28 \text{ m}^2$
 公共服務空間二(交流區): $3.645 \times 6.15 + 1.9 \times 7.42 + 5.75 \times 4.225 + 2.7 \times 4.97 = 74.22 \text{ m}^2$
 公共服務空間三(多功能教室): $6.2 \times 2.75 + 9.14 \times 11.16 = 119.05 \text{ m}^2$
 公共服務空間四(休憩區): $3.22 \times 3.285 + 6.27 \times 3.85 = 34.71 \text{ m}^2$
 高層緩衝空間: $3.22 \times 6.64 + 7.94 \times 6.91 = 76.25 \text{ m}^2$
 車道面積: $8.055 \times 9.71 + 1 \times 2.335 + 0.6 \times 1.05 + 1.45 \times 1.75 = 83.72 \text{ m}^2$

總計: 1199.58 m^2

免計容積陽台
 店舖01: $2 \times 2.175 + 0.775 \times 0.375 = 4.64 \text{ m}^2$
 店舖02: $1.175 \times 5.19 = 6.10 \text{ m}^2$
 店舖03: $1.6 \times 1.5 + 1.425 \times 2.65 = 6.18 \text{ m}^2$
 店舖04: $1.5 \times 4.335 = 6.50 \text{ m}^2$
 店舖06: $3 \times 1.95 = 5.85 \text{ m}^2$
 店舖07: $3 \times 1.675 = 5.03 \text{ m}^2$
 店舖08: $3 \times 1.675 = 5.03 \text{ m}^2$
 公共服務空間: $0.45 \times 1.5 + 1.11 \times 1.925 + 2 \times 12.8 = 28.41 \text{ m}^2$

總計: 67.74 m^2

梯廳
 A棟: $3.05 \times 4.45 = 13.57 \text{ m}^2$
 B棟: $2.68 \times 4.05 + 2.21 \times 3.82 + 1.8 \times 1.935 + 0.45 \times 1.375 + 2.15 \times 2.17 + 2.23 \times 0.95 + 2.6 \times 3.6 = 39.54 \text{ m}^2$
 C棟: $6.51 \times 5.75 + 3.16 \times 4.6 = 51.97 \text{ m}^2$
 D棟: $2.425 \times 2.888 + 0.425 \times 2.4 + 5.775 \times 2.55 + 0.4 \times 1.13 = 23.20 \text{ m}^2$
 E棟: $2.35 \times 2.4 = 5.64 \text{ m}^2$
 F棟: $3.135 \times 2.075 + 2.275 \times 2 + 2.65 \times 5.425 = 25.43 \text{ m}^2$

總計: 161.04 m^2

小於2m梯廳
 F棟: $1.095 \times 1.05 = 1.15 \text{ m}^2$

總計: 1.15 m^2

安全梯
 E棟: $2.59 \times 2.35 + 2.62 \times 3.22 = 14.52 \text{ m}^2$
 F棟: $3.15 \times 0.5 + 3.175 \times 1.825 + 1.095 \times 1.275 + 2.29 \times 2.85 = 15.29 \text{ m}^2$

總計: 29.81 m^2

特別安全梯
 A棟: $2.37 \times 1.935 + 0.37 \times 1.33 + 1.4 \times 2.21 = 8.17 \text{ m}^2$
 B棟: $1.4 \times 2.21 + 0.37 \times 0.95 + 1.935 \times 3.07 = 9.39 \text{ m}^2$
 C棟: $1.3 \times 1.05 + 3.8 \times 5.9 + 1.11 \times 0.85 + 3.13 \times 1.85 + 0.72 \times 1.13 + 0.72 \times 1.13 + (0.72 \times 0.72) / 2 + (0.72 \times 0.72) / 2 = 32.66 \text{ m}^2$
 D棟: $2.725 \times 4.86 + 1.4 \times 3.02 = 17.47 \text{ m}^2$

總計: 67.69 m^2

緊急升降機排煙室
 A棟: $1.33 \times 2 + 0.65 \times 2.15 + 0.97 \times 2.21 + 3.65 \times 2.55 + 1.825 \times 2.85 + 1.8 \times 2.5 = 25.21 \text{ m}^2$
 總計: 25.21 m^2

緊急升降機
 A棟: $2.7 \times 2.5 = 6.75 \text{ m}^2$
 C棟: $2.45 \times 2.55 = 6.25 \text{ m}^2$
 D棟: $2.5 \times 2.45 = 6.13 \text{ m}^2$

總計: 19.13 m^2

電梯間
 A棟: $2.15 \times 2.35 = 5.05 \text{ m}^2$
 B棟: $2.17 \times 2.4 = 5.21 \text{ m}^2$
 E棟: $2.1 \times 2.35 = 4.94 \text{ m}^2$
 F棟: $2.115 \times 2 = 4.23 \text{ m}^2$

總計: 19.43 m^2

管道間
 A棟: $0.55 \times 1.65 = 0.91 \text{ m}^2$
 B棟: $0.55 \times 1.65 = 0.91 \text{ m}^2$
 D棟: $0.4 \times 1 + 0.76 \times 2.45 + 0.775 \times 2.3 = 4.04 \text{ m}^2$
 F棟: $1.035 \times 2 = 2.07 \text{ m}^2$

總計: 7.93 m^2

- X1-19 居室
- X162 免計容積陽台
- Z1-19 管道間
- Z59 停車空間(地下室停車空間)
- Z162 安全梯
- Z162 小於2m梯廳
- Z162 梯廳
- Z162 特別安全梯
- Z162 緊急升降機
- Z162 緊急升降機排煙室
- Z162 電梯間
- Z284 公共服務空間

二、面積計算檢討

樓地板面積計算
 $1199.58 + 161.04 + 1.15 + 29.81 + 67.69 + 25.21 + 19.13 + 29.81 + 7.93 = 1530.97 \text{ m}^2$

陽台面積檢討
 $67.74 \text{ m}^2 < 1530.97 \times 10\% = 153.10 \text{ m}^2$ OK

梯廳面積檢討
 $161.04 \text{ m}^2 > 1530.97 \times 10\% = 153.10 \text{ m}^2$
 $161.04 - 153.10 = 7.94 \text{ m}^2$ (計入容積樓地板)

陽台+梯廳面積檢討
 $67.74 + 152.89 = 220.63 \text{ m}^2 < 1528.85 \times 15\% = 229.33 \text{ m}^2$

設備間面積檢討
 $29.81 + 67.69 + 25.21 + 19.13 + 7.93 = 149.77 \text{ m}^2$

高層緩衝空間檢討
 $11.51 \times 6.0 = 69.06 \text{ m}^2$

公共托育中心檢討
 107.99 m^2

車道面積檢討
 83.72 m^2

當層樓地板面積 1530.97 m^2
 當層容積樓地板面積
 $1530.97 - 161.04 - 149.77 - 69.06 - 107.99 - 83.72 + 7.94 = 967.33 \text{ m}^2$

全棟機電設備面積檢討
 $149.77 + 157.91 + 169.56 + 180.90 \times 8 + 169.56 \times 2 + 140.69 \times 6 + 93.54 \times 2 = 3294.78 \text{ m}^2$
 $(21595.50 - (133.28 + 74.22 + 119.05)) \times 15\% = 3190.34 \text{ m}^2$
 $3294.78 - 3190.34 = 104.44 \text{ m}^2$ (計入全案容積檢討)

全棟樓地板面積計算
 $1530.97 + 179.77 + 1437.25 + 1426.64 \times 3 + 1426.65 \times 8 + 1066.04 \times 6 + 807.82 \times 2 = 26852.99 \text{ m}^2$

全棟容積樓地板面積檢討
 $967.33 + 179.77 + 892.14 + 1175.31 \times 3 + 1167.69 \times 5 + 1172.31 \times 2 + 1168.62$
 $+ 864.89 \times 3 + 872.23 \times 3 + 683.21 + 681.08 + 104.44 = 21596.95 \text{ m}^2$

圖6-8 一層面積計算圖(S=1/300)

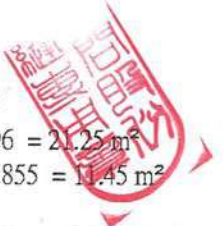
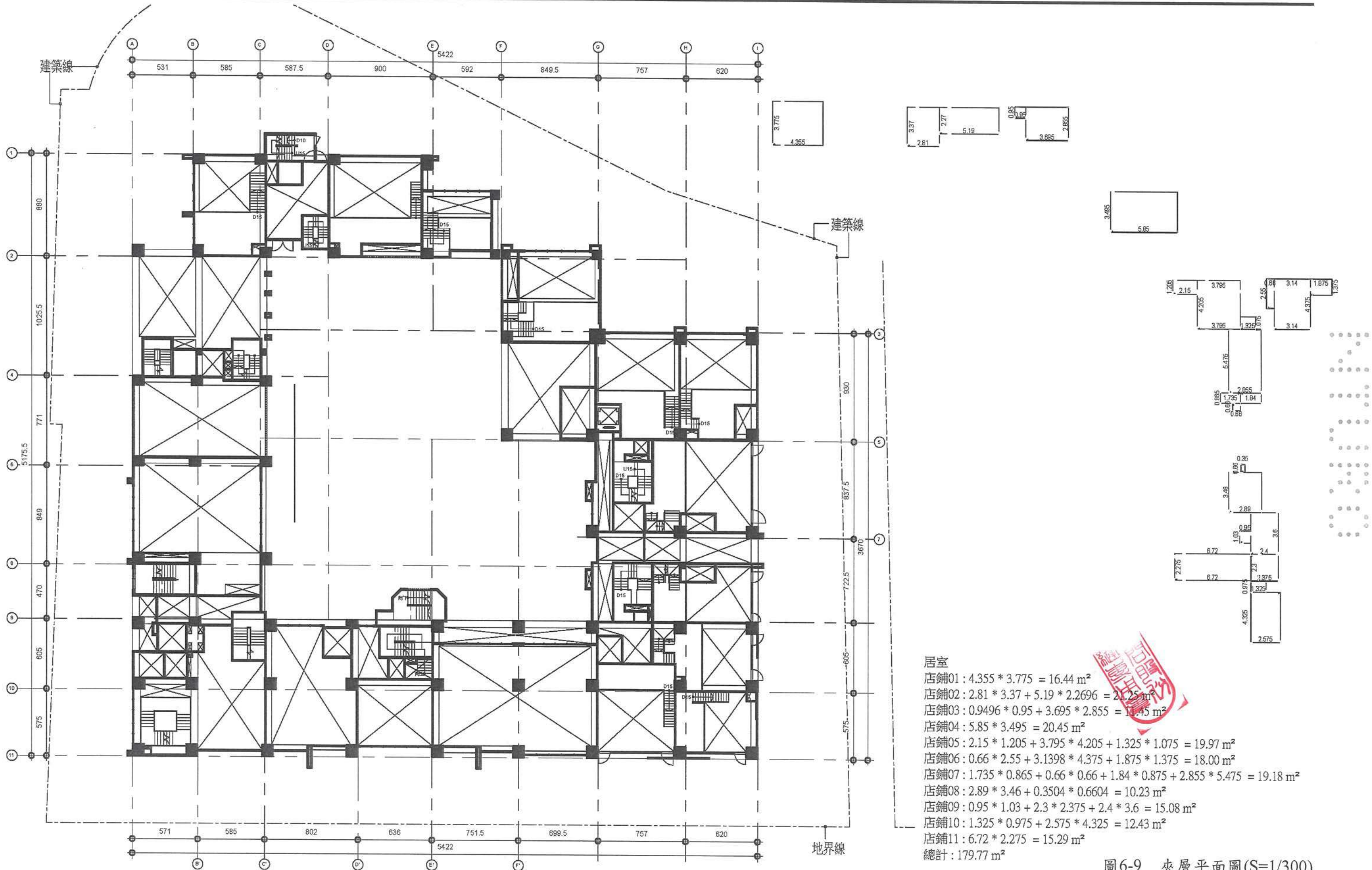


圖6-9 夾層平面圖(S=1/300)

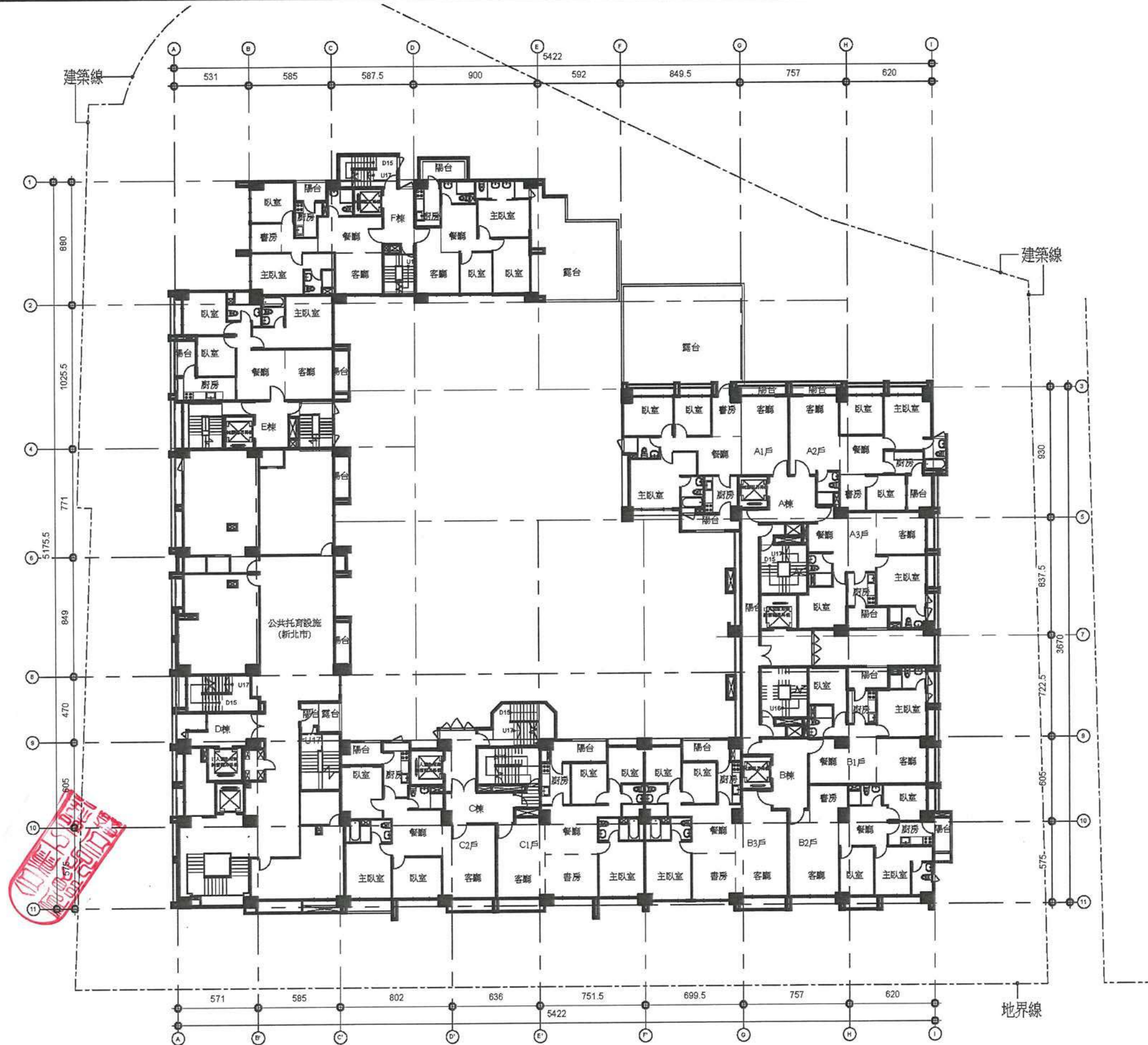


圖6-10 二層平面圖(S=1/300)