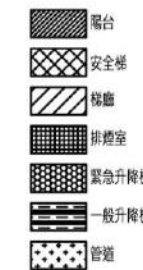


八 步行距離檢核

- 步行距離
- A1 L=4.52+7.92+2.93+1.47+0.85=17.69M < 40M
 - A2 L=4.61+6.23+3.45+1.47+0.85=16.61M < 40M
 - A3 L=3.81+3.49+4.67+3.31+1.47+0.85=17.6M < 40M
 - B1 L=1.97+5.98+6.85+1.02+0.75=16.57M < 40M
 - B2 L=4.6+6.55+5.22+1.05+1.02+0.75=19.19M < 40M
 - B3 L=4.63+4.69+3.45+2.61+1.05+1.02+0.75=18.2M < 40M
 - C1 L=4.7+6.82+1.32+1.52=14.36M < 40M
 - C2 L=9.61+4.4=14.01M < 40M
 - D1 L=4.01+4.49+7.78+0.71=16.99M < 40M
 - D2 L=4.77+9.12+0.98=14.87M < 40M
 - E1 L=4.51+2.48+2.34+3.3+2.77=15.4M < 50M
 - E2 L=4.5+5.78+0.87=11.15M < 50M
 - F1 L=3.56+1.93+6.69+1.94=14.12M < 50M
 - F2 L=4.3+5.75+0.71=10.76M < 50M
- 重複步行距離
- A1 L=4.52+7.92+2.93+1.47+0.85=17.69M < 20M
 - A2 L=4.61+6.23+3.45+1.47+0.85=16.61M < 20M
 - A3 L=4.46+2.57+4.63+2.48+1.47+0.85=16.46M < 20M
 - B1 L=4.57+2.96+7.69+1.02+0.75=16.99M < 20M
 - B2 L=4.6+6.55+5.22+1.05+1.02+0.75=19.19M < 20M
 - B3 L=4.63+4.69+3.45+2.61+1.05+1.02+0.75=18.2M < 20M
 - C1 L=4.7+6.82+1.32+1.52=14.36M < 20M
 - C2 L=9.61+4.4=14.01M < 20M
 - D1 L=4.01+4.49+7.78+0.71=16.99M < 20M
 - D2 L=4.58+8.07+0.98=13.63M < 20M
 - E1 L=4.51+2.48+2.34+3.3=12.63M < 50M
 - E2 L=4.5+5.78=10.28M < 50M
 - F1 L=3.56+1.93+6.69+1.94=12.18M < 50M
 - F2 L=4.3+5.75+0.71=10.05M < 50M

九 採光面積檢核

- A1 2.4x2.5+1x1.75+2.2x2.5+2.8x2.5+2.8x2.5+1x1.75 =29.00㎡ > 77.83/8=9.73 ...OK
- A2 2.4x2.5+2.4x2.5+2.4x2.5+0.9x1.3+1.6x1.5 =21.57㎡ > 70.06/8=8.76 ...OK
- A3 2.2x2.5+2x2.5+0.84x2.5+1x2.5+1.2x1.5 =17.20㎡ > 60.73/8=7.59 ...OK
- B1 2.4x2.5+1.8x2.5+0.84x2.5+1x2.5+1.4x1.5 =24.01㎡ > 71.44/8=8.93 ...OK
- B2 2.4x2.5+2.4x2.5+2.2x2.5+1.4x1.8+1x1.75+1.6x1.4 =25.40㎡ > 85.35/8=10.67 ...OK
- B3 2.4x2.5+2.4x2.5+2.4x2.5+2x2.5+1.6x1.5 =25.40㎡ > 82.94/8=10.37 ...OK
- C1 2.4x2.5+2.4x2.5+2.4x2.5+2x2.5+1.6x1.5 =22.15㎡ > 78.75/8=9.84 ...OK
- D1 2.2x2.5+2.4x2.5+1.6x1.5+2x1.5+2x2.5+1.4x2.5 =21.00㎡ > 93.27/8=11.66 ...OK
- D2 1.4x1.5+2.8x2.5+2.6x2.5+2x1.5+1.6x1.5 =23.15㎡ > 70.61/8=8.83 ...OK
- E1 2.8x2.5+2.8x2.5+2x2.5+1.6x1.5+1x1.75 =24.15㎡ > 70.96/8=8.87 ...OK
- E2 2.8x2.5+2.8x2.5+2.4x2.5+1.6x1.5+1x1.75 =22.00㎡ > 59.59/8=7.45 ...OK
- F1 2.4x2.5+2.4x2.5+1.8x2.5+2.2x2.5 =25.25㎡ > 57.58/8=7.20 ...OK
- F2 2.2x2.5+2.2x2.5+2.6x2.5+2.2x2.5+0.9x2.5 =25.25㎡ > 57.58/8=7.20 ...OK



一 十三層 各戶 樓地板面積計算

室內面積		
A1	4.1x0.45+3.595x2.35+5.7x1.37+4.15x2.7	= 86.31㎡
A2	10.295x3.05+11.345x2.65+1.675x2.15+2.6x4.82	= 77.60㎡
A3	0.8x2.17+2.8x5.075+2.5x3.52+6.775x3+8.375x2.75+0.45x1.675	= 68.86㎡
B1	8.37x2.8+6.77x3+2.75x8.37	= 66.77㎡
B2	6.15x1.47+8.55x2.33+5.6x9	= 79.36㎡
B3	4.6x2.65+4.27x3.45+6.715x6.4+1.45x2.17+3.5x6.15	= 94.57㎡
C1	1.85x5.75+5.3x1.33+7.44x9.6+1.15x2.65	= 92.16㎡
C2	2x1.725+3.8x4.97+2.45x2.375+7.15x5.675+3.78x5.3	= 88.77㎡
D1	1.675x2.45+2.675x4.235+3x4.685+3.985x2.775+3.225x3.085+2.89x2.055+7.145x5.675	= 96.98㎡
D2	4.21x1+1.73x1.45+8.49x9.71+0.59x1.65+5.35x2+2.6x0.4	= 101.87㎡
E1	1.75x1.45+4.3x9.71+10.71x3.26	= 79.21㎡
E2	2.835x1+4.86x0.35+7.505x9.71+1.75x1.45	= 79.95㎡
F1	2.515x3.15+2.3x1.05+1.885x2+9.435x5.65	= 67.42㎡
F2	7.65x1.85+6.5x8.15	= 67.13㎡
小計:		= 1146.96㎡

二 面積計算檢核

樓地板面積檢核
 1146.96+90.93+132.9+19.51+19.13+11.65+5.58 = 1426.66㎡
 陽台免計容積面積檢核
 132.01㎡ < 1426.67x10%=142.67㎡ ...OK
 樓梯免計容積面積檢核
 90.93-1.71=89.22㎡ < 1426.67x10%=142.67㎡ ...OK
 陽台+樓梯免計容積面積檢核
 132.01+89.22=221.23㎡ > 1426.67x15%=214.00㎡ ...OK
 221.23-214.00=7.23㎡(計入容積總量)
 設備間面積檢核
 132.9+19.13+11.65+5.58=169.26㎡
 常設容積樓地板面積檢核
 1426.66-89.22-169.26+7.23=1175.41㎡
 (備註) (驗收) (備註) (備註) (備註) (備註) (備註) (備註) (備註) (備註) (備註)

三 當層戶數檢核 14 戶

四 緊急升降機設置檢核

本棟 A、B、C 棟 21 層, D 棟 19 層, E 棟 13 層, F 棟 13 層, 共計 74 層, 應設置緊急升降機 05 部
 A、B 棟 (11~21 層) - 設置緊急升降機
 (86.31+79.95+68.11+66.77+79.85+94.57)x11=5231.16 > 500㎡
 C 棟 (11~21 層) - 設置緊急升降機 (92.16+88.77)x11=1990.23 > 500㎡
 D 棟 (11~19 層) - 設置緊急升降機
 (96.98+101.87)x3+(96.98+91.70)x6=1728.63 > 500㎡
 E 棟 (11~13 層) - 免設置 (79.21+79.95)x3=477.48 < 500㎡
 F 棟 (11~13 層) - 免設置 (67.42+67.13)x3=403.65 < 500㎡

五 排煙室面積檢核

A 棟 3.76x2.68=10.08㎡ > 10.00㎡...OK
 C 棟 4.5x2.39+1.45x0.4=11.34㎡ > 10.00㎡...OK
 D 棟 2.45x4.085+1.15x1.425=11.65㎡ > 10.00㎡...OK

六 特別安全梯面積檢核

A、B 棟 (17.36+17.25+10.08)=44.69㎡
 > (77.83+71.87+59.98+58.64+71.44+85.35)x3%=12.75㎡
 C 棟 (31.07+11.34)=42.41㎡ > (82.94+78.75)x3%=4.85㎡
 D 棟 (25.51+11.65)=37.16㎡ > (89.55+93.27)x3%=5.48㎡

七 居室面積計算

居室面積

A1	1.25x0.45+1.575x2.17+1.65x2.725	= 8.48㎡
A2	1.675x2.175+1.675x2.325	= 7.54㎡
A3	1.775x2.1+2.75x1.6	= 8.13㎡
B1	1.775x2.1+2.75x1.6	= 8.13㎡
B2	1.5x2.65+1.675x2.65	= 8.41㎡
B3	1.625x2.4+1.6x3.325	= 9.22㎡
C1	1.625x2.4+1.6x3.325	= 9.22㎡
C2	3.355x1.6+2.695x1.725	= 10.02㎡
D1	2.3x1.675+1.625x2.2	= 7.43㎡
D2	2.235x3.85	= 8.60㎡
E1	2.235x3.85	= 8.60㎡
E2	1.675x0.35+1.81x4.1+0.415x2.36	= 8.99㎡
F1	1.885x2.025+1.825x2.2	= 7.83㎡
F2	1.675x2.675+3.825x1.325	= 9.55㎡

陽台面積

A1	1.0x3.775+4.3x1.3	= 9.37㎡
A2	3.795x1.0+1.95x2.6	= 8.87㎡
A3	3x1.675	= 5.03㎡
B1	3x1.675	= 5.03㎡
B2	1.35x3.0+3.55x1.0	= 7.60㎡
B3	4.27x1.675	= 7.15㎡
C1	3.68x1.675+1.11x1.6+3.37x1.0	= 11.31㎡
C2	2.97x1.8+1.0x3.35	= 8.70㎡
D1	3.225x1.675+1.0x3.425	= 8.83㎡
D2	1.525x2.55+3.12x1.2	= 7.63㎡
E1	1.525x2.55+3.12x1.2	= 7.63㎡
E2	2.92x1.525+3.12x1.2	= 8.20㎡
F1	2.3x1.525	= 3.51㎡
F2	2x1.425+1.925x1.5	= 5.74㎡
A、B 棟	0.35x1.5+1.35x1.3+1.425x1.675+1.35x1.275	= 24.91㎡
D 棟	1.35x1.85	= 2.50㎡
小計:		= 132.01㎡

樓梯面積計算

A 棟	0.65x1.05+3.4x3.4+3.76x2.68	= 22.32㎡
B 棟	0.82x1.25+5x2.6	= 14.29㎡
C 棟	2.25x5.11+4.5x2.39+1.45x0.4	= 22.83㎡
D 棟	5.6x2.51	= 14.06㎡
E 棟	2.4x3.4	= 8.16㎡
F 棟	2.29x4.05	= 9.27㎡
小計:		= 90.93㎡

樓梯不足M面積計算

A 棟	0.65x1.05	= 0.68㎡
B 棟	0.82x1.25	= 1.03㎡
C 棟	1.45x0.4	= 0.58㎡
小計:		= 2.29㎡

樓梯面積計算

A 棟	5.075x3.42	= 17.36㎡
B 棟	5.045x3.42	= 17.25㎡
C 棟	1.11x1.3+2.43x3.46+(4.57+3.13)x0.72/2+1.11x1.98+4.57x3.2+1.8x1.85	= 32.77㎡
D 棟	2.7x4.57+0.59x1.05+0.35x0.7+1.275x0.38+4.09x2.89	= 25.51㎡
E 棟	3.4x2.59+2.15x1.05+3.4x3.17	= 21.84㎡
F 棟	2.325x4.27+2.29x3.6	= 18.17㎡
小計:		= 132.9㎡

升降梯面積計算

A 棟	2.35x2.15	= 5.05㎡
B 棟	2.4x2.17	= 5.21㎡
E 棟	2.35x2.15	= 5.05㎡
F 棟	2.1x2	= 4.20㎡
小計:		= 19.51㎡

緊急升降機面積計算

A、B 棟	2.7x2.5	= 6.75㎡
C 棟	2.45x2.55	= 6.25㎡
D 棟	2.5x2.45	= 6.13㎡
小計:		= 19.13㎡

排煙室面積計算

D 棟	2.45x4.085+1.425x1.15	= 11.65㎡
小計:		= 11.65㎡

設備間面積計算

A、B 棟	0.55x1.65x2	= 1.82㎡
D 棟	1.535x2.45	= 3.76㎡
小計:		= 5.58㎡

居室面積

A1	86.31-8.48	= 77.83㎡
A2	77.6-7.54	= 70.06㎡
A3	68.86-8.13	= 60.73㎡
B1	66.77-8.13	= 58.64㎡
B2	79.85-8.41	= 71.44㎡
B3	94.57-9.22	= 85.35㎡
C1	92.16-9.22	= 82.94㎡
C2	88.77-10.02	= 78.75㎡
D1	96.98-7.43	= 89.55㎡
D2	101.87-8.60	= 93.27㎡
E1	79.21-8.60	= 70.61㎡
E2	79.95-8.99	= 70.96㎡
F1	67.42-7.83	= 59.59㎡
F2	67.13-9.55	= 57.58㎡

圖 11-32 十三層面積計算圖(S=1/300)

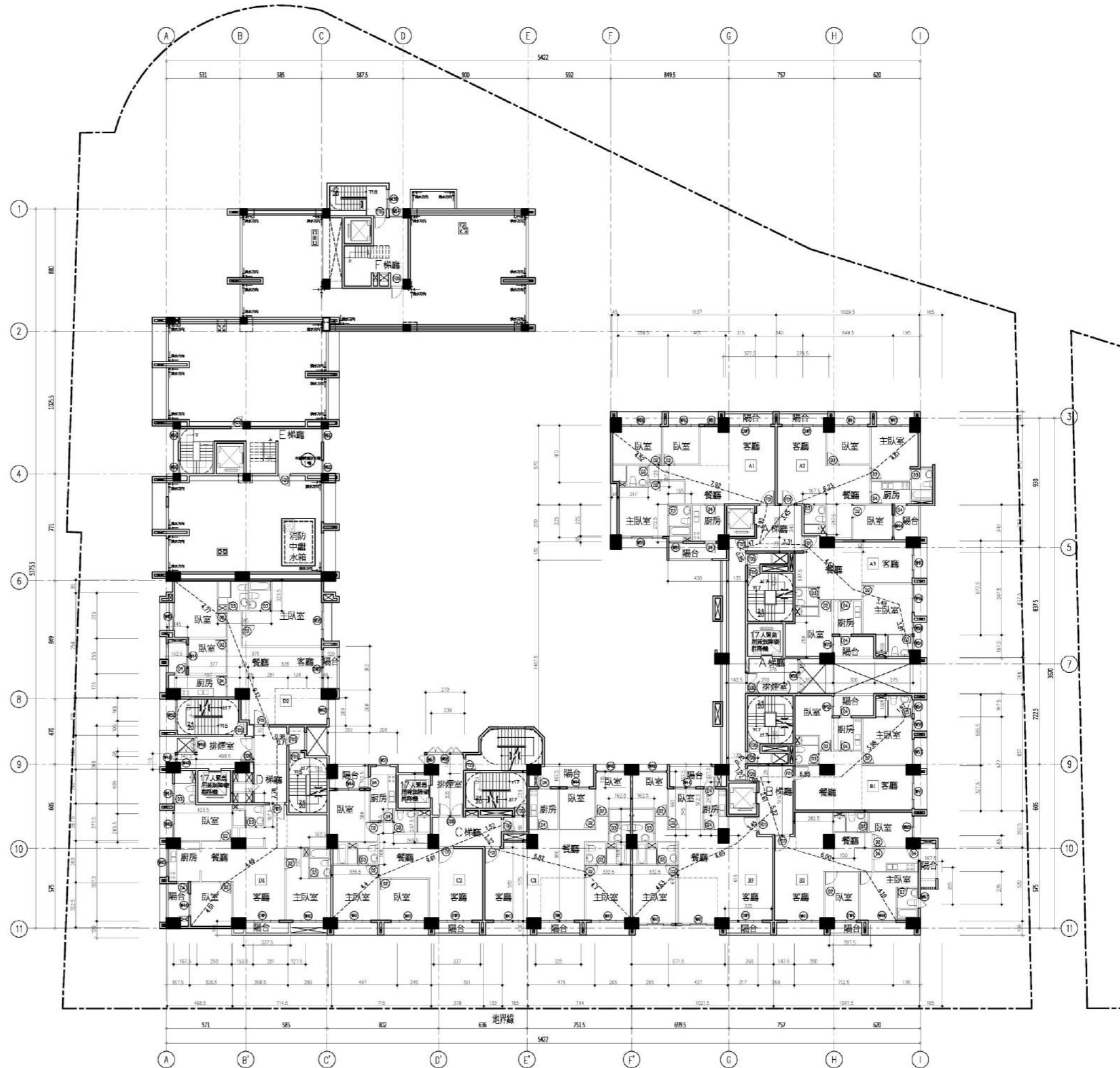


圖11-33 十四層平面圖(S=1/300)

一、十四層 各戶 樓地板面積計算

室內面積		
A1	4.1x0.45+3.595x2.35+5.7x11.37+4.15x2.7	= 86.31
A2	10.295x3.05+11.345x2.65+1.675x2.15+2.6x4.82	= 77.60
A3	0.8x2.17+2.8x5.075+2.5x3.52+6.775x3+8.375x2.75+0.45x1.675	= 68.86
B1	8.37x2.8+6.77x3+2.75x8.37	= 66.77
B2	6.15x1.47+8.55x2.33+5.6x9	= 79.36
B3	4.6x2.65+4.27x3.45+6.715x6.4+1.45x2.17+3.5x6.15	= 94.57
C1	1.85x5.75+5.3x1.33+7.44x9.6+1.15x2.65	= 92.16
C2	2x1.725+3.8x4.97+2.45x2.375+7.15x5.675+3.78x5.3	= 88.77
D1	1.675x2.45+2.675x4.235+3x4.685+3.985x2.775+3.225x3.085+2.89x2.055+7.145x5.675	= 96.98
D2	3.26x1+1.73x1.45+7.54x9.71+0.59x1.65+5.35x2+2.6x0.4	= 91.70
小計:		= 843.08
陽台面積		
A1	1.0x3.775+4.3x1.3	= 9.37
A2	3.795x1.0+1.95x2.6	= 8.87
A3	3x1.675	= 5.03
B1	3x1.675	= 5.03
B2	2.425x1+3.0x1.35	= 6.48
B3	4.27x1.675+3.35x1.0	= 10.50
C1	3.68x1.675+1.11x1.6+3.25x1.0	= 11.19
C2	2.97x1.8+1.0x3.37	= 8.72
D1	3.225x1.675+1.0x3.425	= 8.83
D2	1.525x2.55+3.12x1.2	= 7.63
A,B棟	0.35x1.5+1.35x1.3+1.425x14.675+1.35x1.275	= 24.91
D棟	1.35x1.85	= 2.50
小計:		= 109.06
樓面面積計算		
A棟	0.65x1.05+3.4x3.4+3.76x2.68	= 22.32
B棟	0.82x1.25+5.1x2.6	= 14.29
C棟	2.25x5.11	= 11.50
D棟	5.6x2.51	= 14.06
小計:		= 62.17
樓面不足2M面積計算		
A棟	0.65x1.05	= 0.68
B棟	0.82x1.25	= 1.03
小計:		= 1.71
樓梯面積計算		
A棟	5.075x3.42	= 17.36
B棟	5.045x3.42	= 17.25
C棟	1.11x1.3+2.43x3.46+(4.57+3.13)x0.72/2+1.11x1.98+4.57x3.2+1.8x1.85	= 32.77
D棟	2.7x4.57+0.59x1.05+0.35x0.7+1.275x0.38+4.09x2.89	= 25.51
小計:		= 92.89
升降機面積計算		
A棟	2.35x2.15	= 5.05
B棟	2.4x2.17	= 5.21
小計:		= 10.26
緊急升降機面積計算		
A,B棟	2.7x2.5	= 6.75
C棟	2.45x2.55	= 6.25
D棟	2.5x2.45	= 6.13
小計:		= 19.13
排煙室面積計算		
C棟	1.45x2.79+2.39x3.05	= 11.34
D棟	2.45x4.085+1.425x1.15	= 11.65
小計:		= 22.99
設備間面積計算		
A,B棟	0.55x1.65x2	= 1.82
D棟	1.535x2.45	= 3.76
小計:		= 5.58

二、面積計算檢核

樓地板面積檢核	
843.08+62.17+92.89+10.26+19.13+22.99+5.58	= 1056.10
陽台免計容面積檢核	109.06 > 1056.10x10%=105.61
109.06-105.61=3.45	(計入容積總量)
樓面免計容面積檢核	62.17-1.71=60.46 < 1056.10x10%=105.61 ...OK
陽台+樓面免計容面積檢核	109.06+60.46=169.52 > 1056.10x15%=158.42
169.52-158.42=11.10	(計入容積總量)
設備間面積檢核	92.89+19.13+22.99+5.58=140.59
當層容積樓地板面積檢核	(陽台總量10%部分)
1059.55-60.46-140.59+11.10+3.45=873.05	(陽台) (設備間) (陽台+樓面總量5%部分)

三、當層戶數檢核 10戶

四、緊急升降機設置檢核	
本樓A,B,C棟21層,高74.45M;D棟19層,高67.65M;總樓高三層,高21.7M;樓層高度不一,應採分段0.05公尺	
A,B棟(11~21層) - 設置緊急升降機	(86.31+79.95+68.11+66.77+79.85+94.57)x11=5231.16 > 500
C棟(11~21層) - 設置緊急升降機	(92.16+88.77)x11=1990.23 > 500
D棟(11~19層) - 設置緊急升降機	(96.98+101.87)x3+(96.98+91.70)x6=1728.63 > 500
E棟(11~13層) - 免設置	(79.21+79.95)x3=477.48 < 500
F棟(11~13層) - 免設置	(67.42+67.13)x3=403.65 < 500

五、排煙室面積檢核

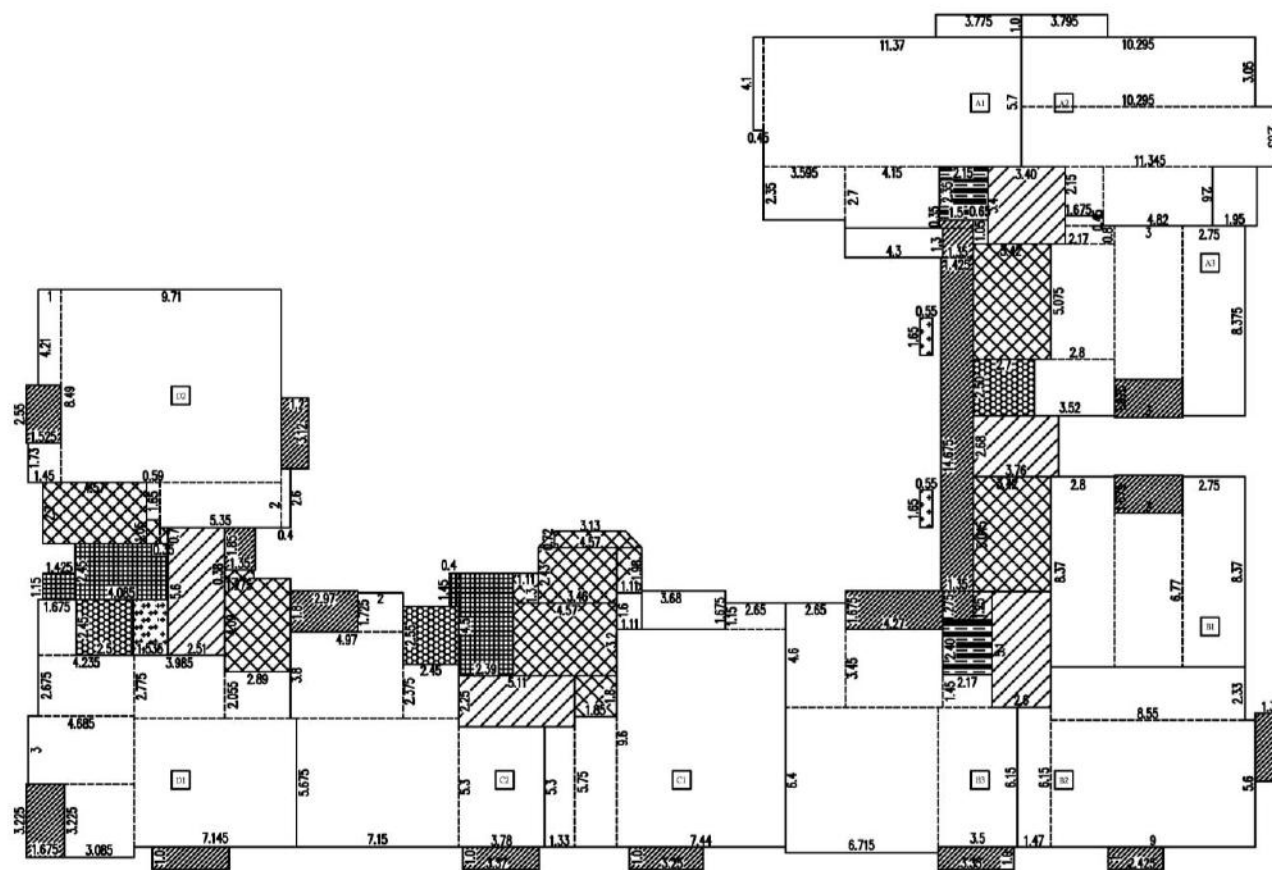
A,B棟	3.76x2.68=10.08 > 10.00...OK
C棟	4.5x2.39+1.45x0.4=11.34 > 10.00...OK
D棟	2.45x4.085+1.15x1.425=11.65 > 10.00...OK

六、特別安全梯面積檢核

A,B棟	(17.36+17.25+10.08)=44.69 > (77.83+71.87+59.98+58.64+71.44+85.35)x3%=12.75
C棟	(31.07+11.34)=42.41 > (82.94+78.75)x3%=4.85
D棟	(25.51+11.65)=37.16 > (89.55+83.10)x3%=5.18

七、居室面積計算

廁所面積		
A1	1.25x0.45+1.575x2.17+1.65x2.725	= 8.48
A2	1.675x2.175+1.675x2.325	= 7.54
A3	1.775x2.1+2.75x1.6	= 8.13
B1	1.775x2.1+2.75x1.6	= 8.13
B2	1.5x2.65+1.675x2.65	= 8.41
B3	1.625x2.4+1.6x3.325	= 9.22
C1	1.625x2.4+1.6x3.325	= 9.22
C2	3.355x1.6+2.695x1.725	= 10.02
D1	2.3x1.675+1.625x2.2	= 7.43
D2	2.235x3.85	= 8.60
居室面積		
A1	86.31-8.48	= 77.83
A2	77.6-7.54	= 70.06
A3	68.86-8.13	= 60.73
B1	66.77-8.13	= 58.64
B2	79.85-8.41	= 71.44
B3	94.57-9.22	= 85.35
C1	92.16-9.22	= 82.94
C2	88.77-10.02	= 78.75
D1	96.98-7.43	= 89.55
D2	91.70-8.60	= 83.10



八、步行距離檢核

步行距離	
A1	L=4.52+7.92+2.93+1.47+0.85=17.69M < 40M
A2	L=4.61+6.23+3.45+1.47+0.85=16.61M < 40M
A3	L=3.81+3.49+4.67+3.31+1.47+0.85=17.6M < 40M
B1	L=1.97+5.98+6.85+1.02+0.75=16.57M < 40M
B2	L=4.6+6.55+5.22+1.05+1.02+0.75=19.19M < 40M
B3	L=4.63+4.69+3.45+2.61+1.05+1.02+0.75=18.2M < 40M
C1	L=4.7+6.82+1.32+1.52=14.36M < 40M
C2	L=9.61+4.4=14.01M < 40M
D1	L=4.01+4.49+7.78+0.71=16.99M < 40M
D2	L=4.77+9.12+0.98=14.87M < 40M
重複步行距離	
A1	L=4.52+7.92+2.93+1.47+0.85=17.69M < 20M
A2	L=4.61+6.23+3.45+1.47+0.85=16.61M < 20M
A3	L=4.46+2.57+4.63+2.48+1.47+0.85=16.46M < 20M
B1	L=4.57+2.96+7.69+1.02+0.75=16.99M < 20M
B2	L=4.6+6.55+5.22+1.05+1.02+0.75=19.19M < 20M
B3	L=4.63+4.69+3.45+2.61+1.05+1.02+0.75=18.2M < 20M
C1	L=4.7+6.82+1.32+1.52=14.36M < 20M
C2	L=9.61+4.4=14.01M < 20M
D1	L=4.01+4.49+7.78+0.71=16.99M < 20M
D2	L=4.58+8.07+0.98=13.63M < 20M

九、採光面積檢核

A1	2.4x2.5+1x1.75+2.2x2.5+2.8x2.5+2.8x2.5+1x1.75	=29.00 > 77.83/8=9.73 ...OK
A2	2.4x2.5+2.4x2.5+2.4x2.5+0.9x1.3+1.6x1.5	=21.57 > 70.06/8=8.76 ...OK
A3	2.2x2.5+2x2.5+0.84x2.5+1x2.5+1.2x1.5	=16.90 > 60.73/8=7.59 ...OK
B1	2.4x2.5+1.8x2.5+0.84x2.5+1x2.5+1.4x1.5	=17.20 > 58.64/8=7.33 ...OK
B2	2.4x2.5+2.4x2.5+2.2x2.5+1.4x1.8+1x1.75+1.6x1.4	=24.01 > 71.44/8=8.93 ...OK
B3	2.4x2.5+2.4x2.5+2.4x2.5+2x2.5+1.6x1.5	=25.40 > 85.35/8=10.67 ...OK
C1	2.4x2.5+2.4x2.5+2.4x2.5+2x2.5+1.6x1.5	=25.40 > 82.94/8=10.37 ...OK
C2	2.4x2.5+2.4x2.5+2.4x2.5+1.6x1.5+1x1.75	=22.15 > 78.75/8=9.84 ...OK
D1	2.2x2.5+2.4x2.5+1.6x1.5+2x1.5+2x2.5+1.4x2.5	=25.40 > 89.55/8=11.19 ...OK
D2	1.4x1.5+2.8x2.5+2.6x2.5+2x1.5+1.6x1.5	=21.00 > 83.10/8=10.39 ...OK

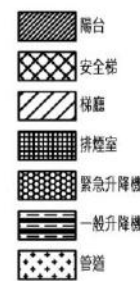


圖11-34 十四層面積計算圖(S=1/300)

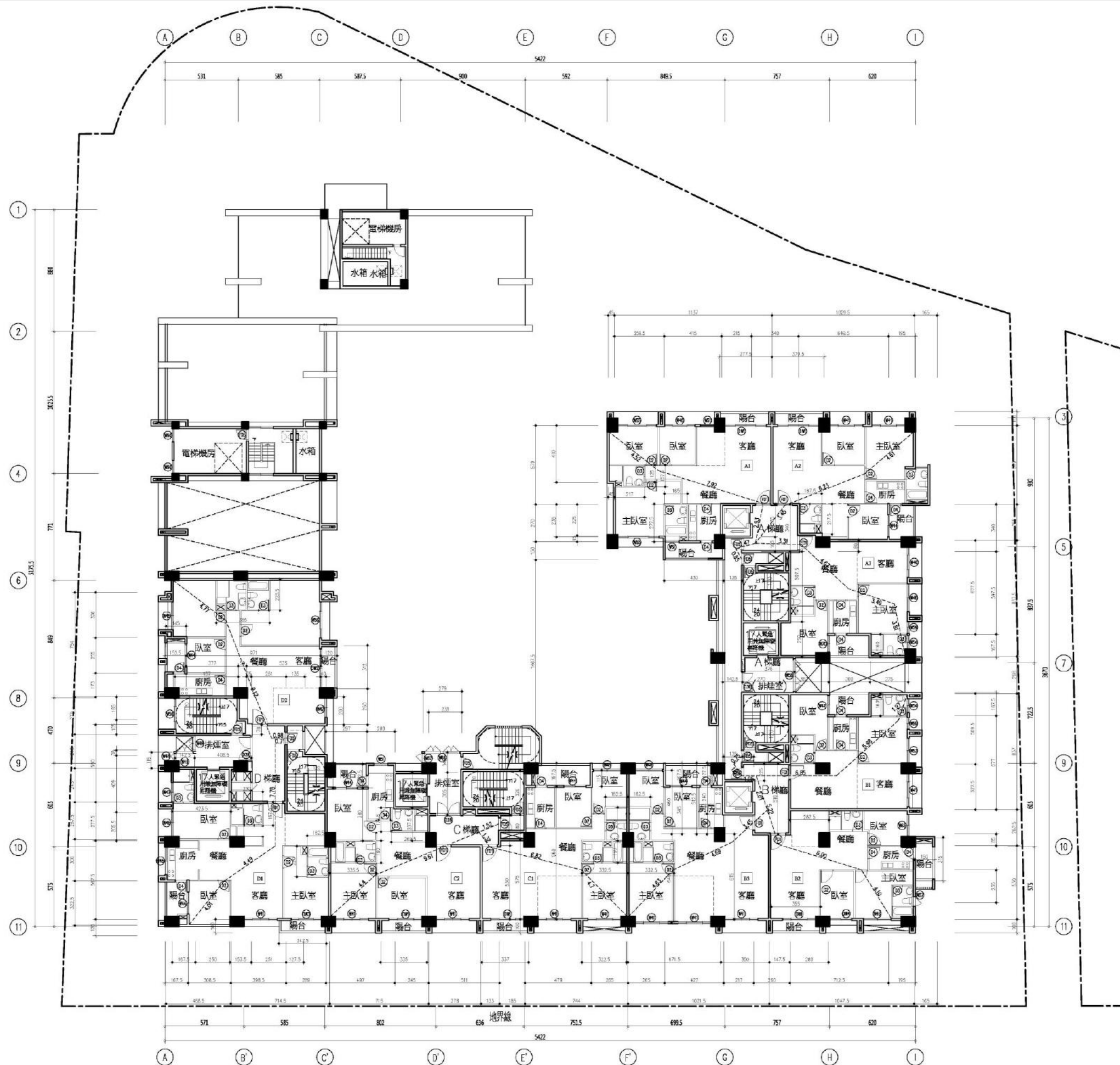


圖11-35 十五層平面圖(S=1/300)